



Community Data Program Toronto Consortium

Making the most of the 2016 Census

Census Backgrounders

- Summary of high level data at the level of the City and other geographies
- Simple presentation, key points in bullet point text and supporting maps, tables and charts
- Prepared by research staff across the City government, led by research staff in City Planning; Social Development Finance & Administration; and Economic Development & Culture divisions

February 9, 2017

2016 Census: Population and Dwelling Counts

The 2016 Census Day was May 10, 2016. On February 8, 2017, Statistics Canada released its first set of data from this Census, on population and dwelling counts.

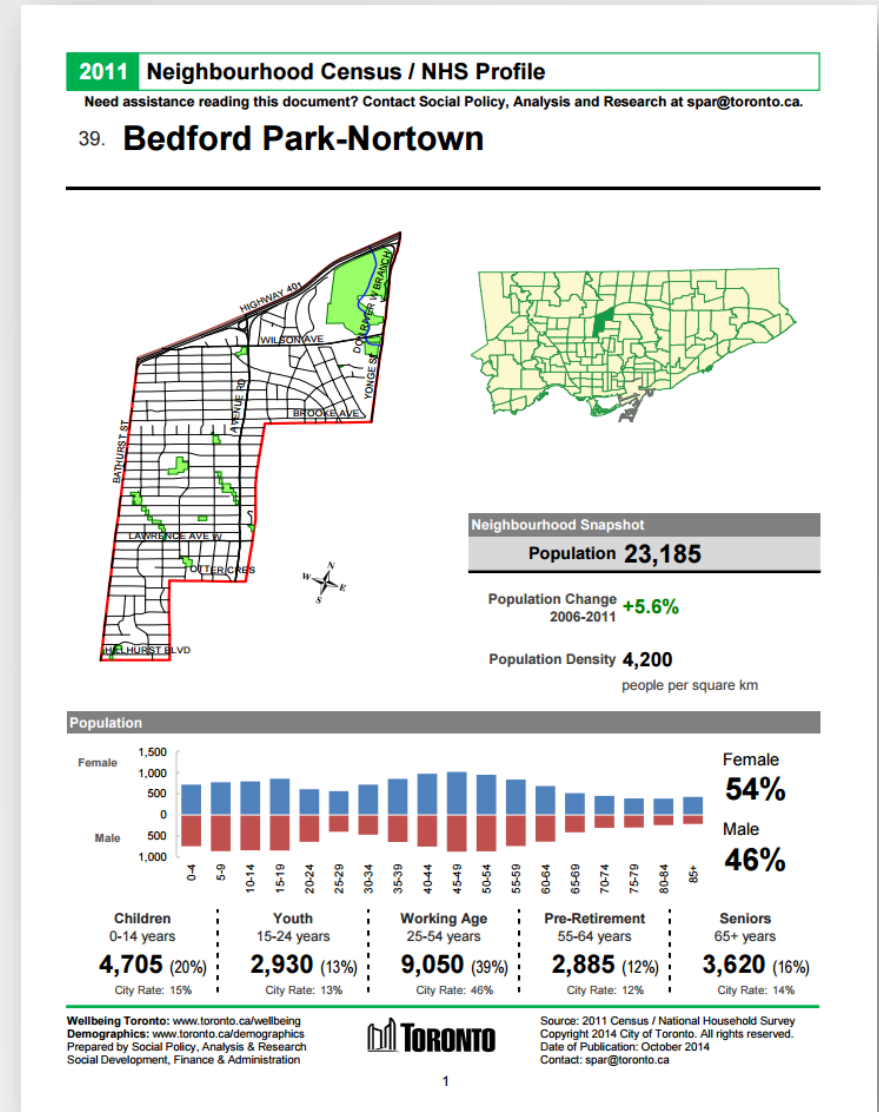
KEY POINTS

Population

- The 2016 population of Toronto is 2,731,571, or 7.8% of Canada's total population of 35,151,728. The data is not adjusted for undercoverage (see Glossary).
- Toronto's population grew by 116,511 residents between 2011 and 2016, an increase of 4.5%. This is more than the number of people added between 2006 and 2011 of 111,779 or 4.5%.
- Three cities in Canada saw their population grow by more than 100,000 people between 2011 and 2016: Calgary, up by 142,387; Edmonton, up by 120,345; and Toronto with 116,511 more people.
- 228,290 more people live in Toronto than were here a decade ago.
- The 2016 population of the Greater Toronto and Hamilton Area (GTHA) is 6,954,433, or 19.8% of Canada's population. The city of Toronto accounts for 39.3% of the GTHA's population. This is down slightly from 39.8% of the GTHA in 2011.
- Between 2011 and 2016, the GTHA's population increased by 5.8% or by 380,293 persons. Toronto accounts for about 30.6% of the GTHA's growth. This is compared to 21.8% of the GTHA growth between 2006 and 2011. The city's share of the GTHA growth has increased by 40.4%.
- The growth rates of the GTHA regions and single-tier municipalities ranged between 3.3% and 9.3%. Halton Region had the strongest growth rate at 9.3%, followed by York Region at 7.5%, Peel Region at 6.5%, Durham Region with 6.2% and Hamilton at 3.3%.
- Growth rates varied across the GTHA's 26 municipalities, ranging from 0.2% to 30.5%. This includes the single-tier municipalities of Toronto and Hamilton and the cities and towns in the GTHA.
- The five fastest-growing municipalities in the GTHA with a population growth rate of more than 10% include Milton at 30.5%, followed by King at 23.2%, Whitchurch-Stouffville at 21.8%, Brampton at 13.3% and Caledon at 11.8%.
- Although Statistics Canada makes a great effort to count every person, in each Census a notable number of people are left out for a variety of reasons. For

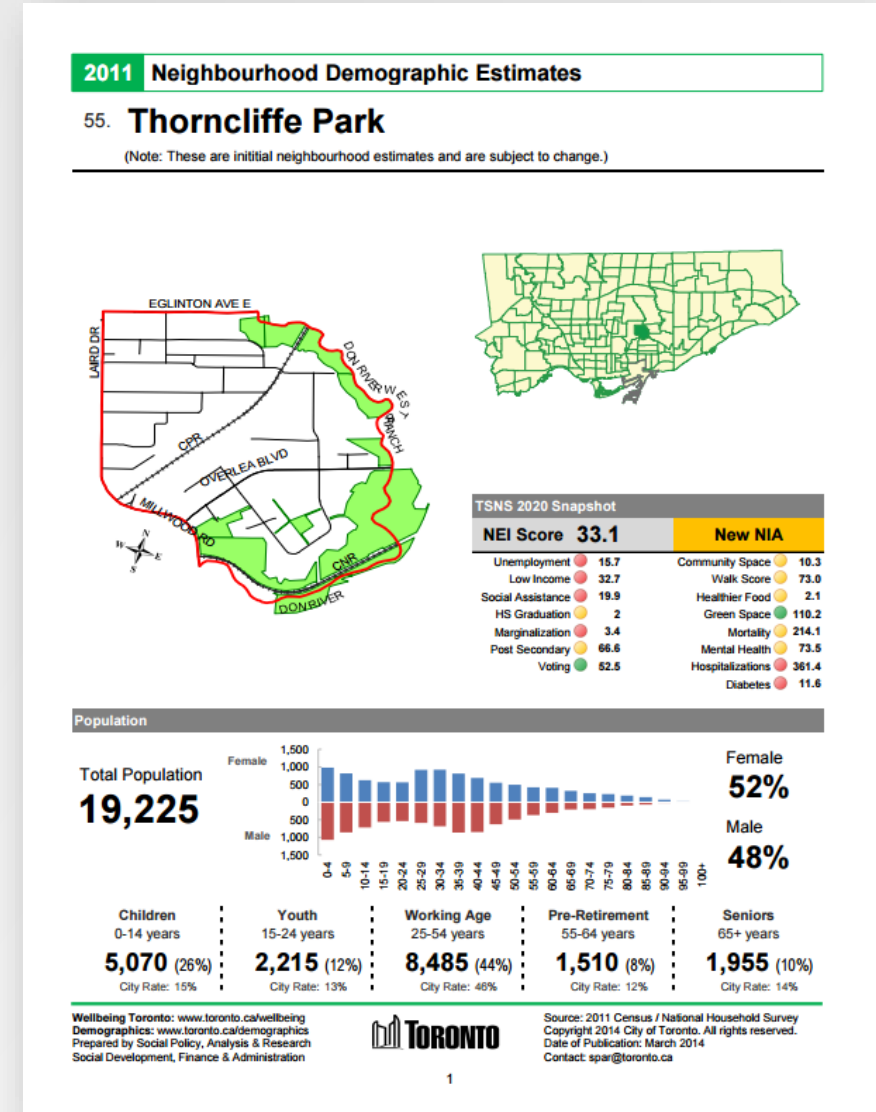
Neighbourhood Profiles

- Neighbourhood level profiles developed to illustrate local trends in key Census data releases:
 - Age & gender
 - Language
 - Family and Dwellings
 - NHS Languages, Immigration, Income
- Mostly charts of data with some large tables



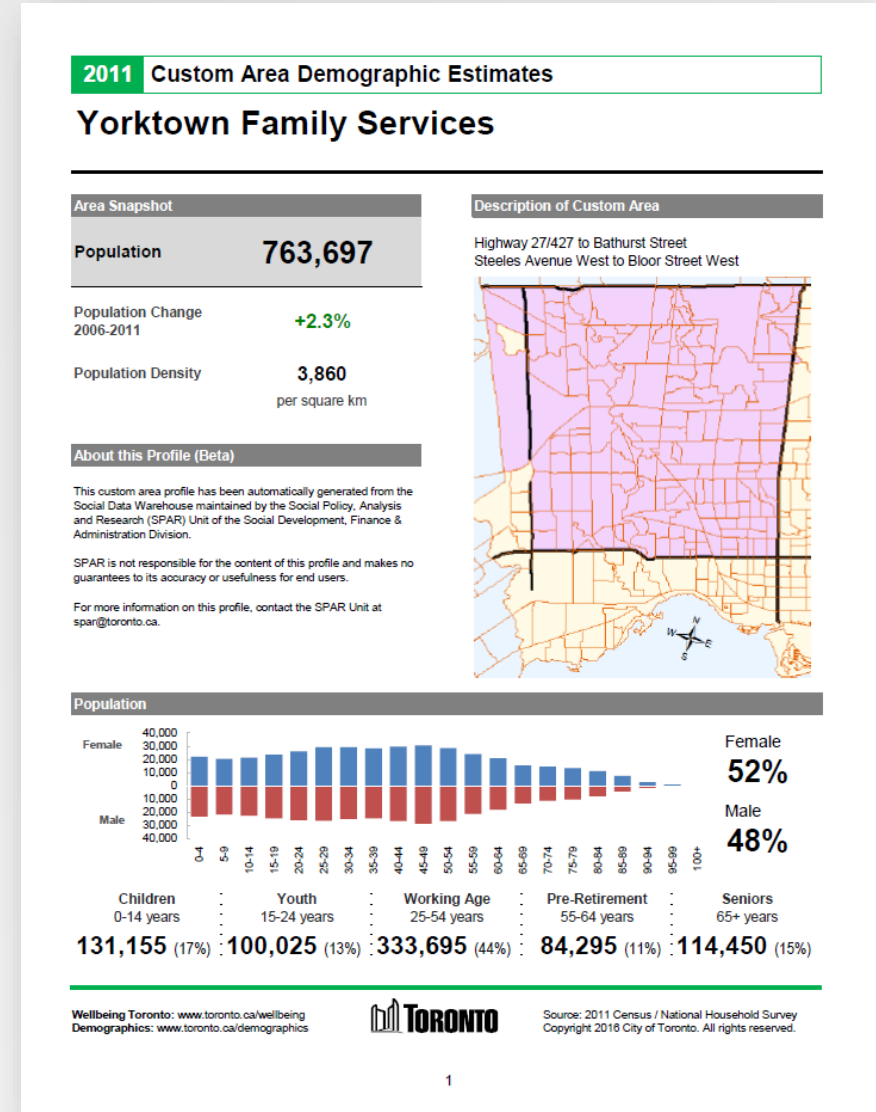
NIA Profiles

- Profiles of Neighbourhood Improvement Areas developed to illustrate local demographic trends, along with TSNS2020 Equity Score data.
- Almost entirely charts of data with some smaller tables.



Custom Area Profiles

- Same format as the NIA profiles, but based on Census Tract level data customized to service boundaries.
- Requires manual identification of census tracts, but process has been automated for some City service boundaries, such as libraries and recreation centres.



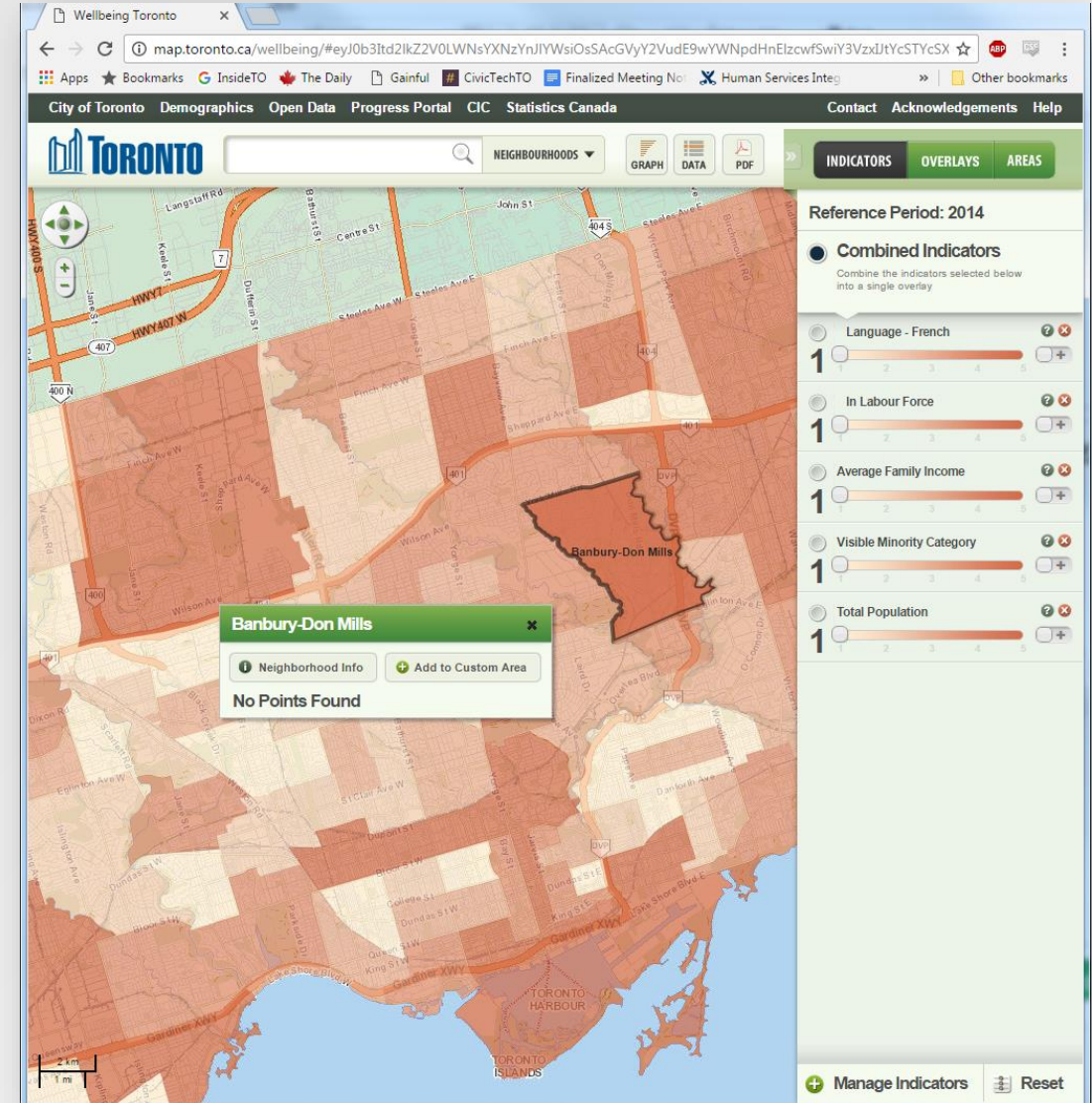
Potential: Population Profiles

Looking at developing profiles of specific population groups using Community Data Program Target Group Profiles

- Population living alone
- Population age 0-17
- Population age 65+
- Population living in subsidized housing
- Visible minority population
- Female lone parents
- Low income population
- Francophone population
- Population with activity difficulties
- Aboriginal identity population
- Immigrants
- Recent Immigrants

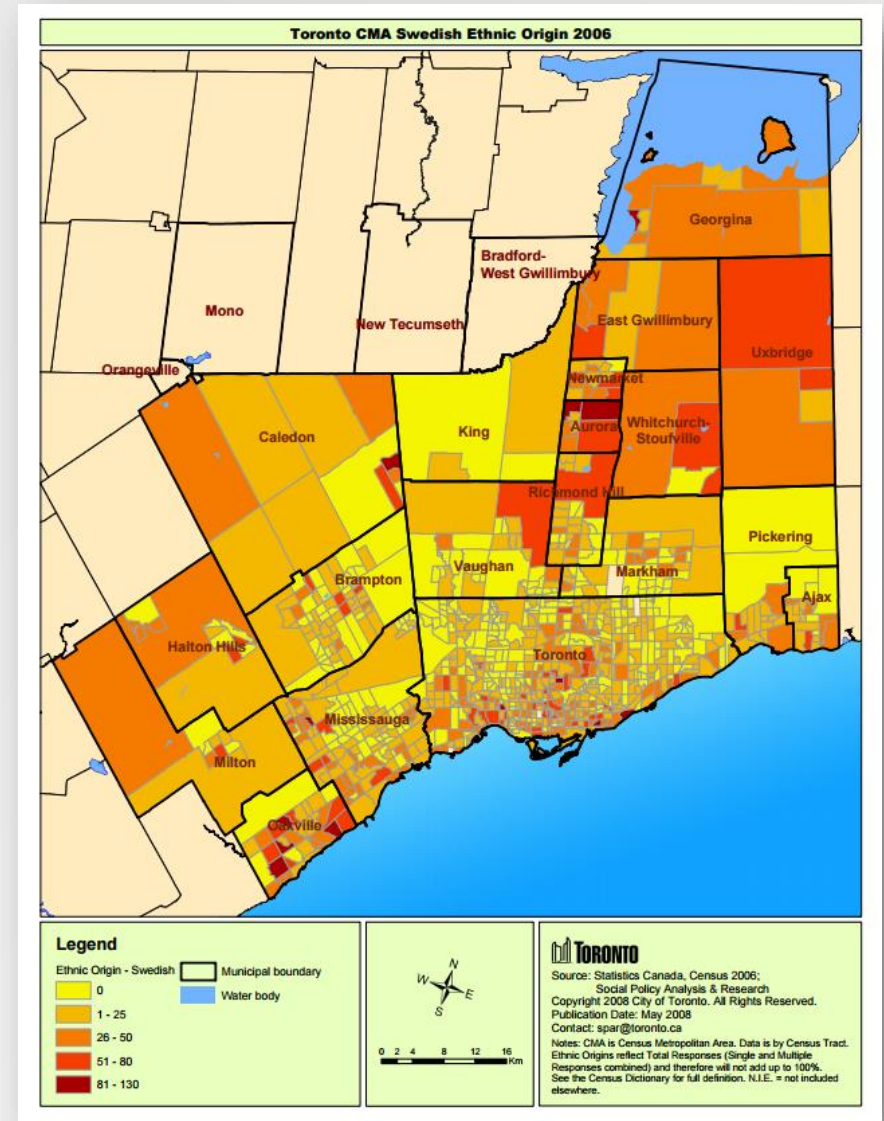
Wellbeing Toronto

- Map visualization tool that provides statistics about community well-being across Toronto's neighbourhoods
- Census data are available alongside other data sources. Raw data for most indicators can be exported to MS Excel or .csv formats.



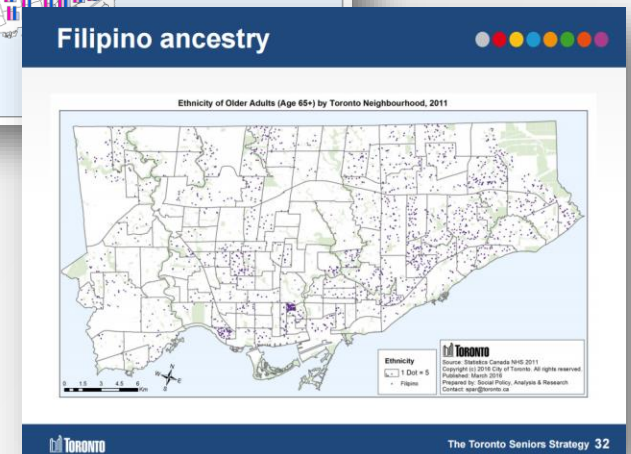
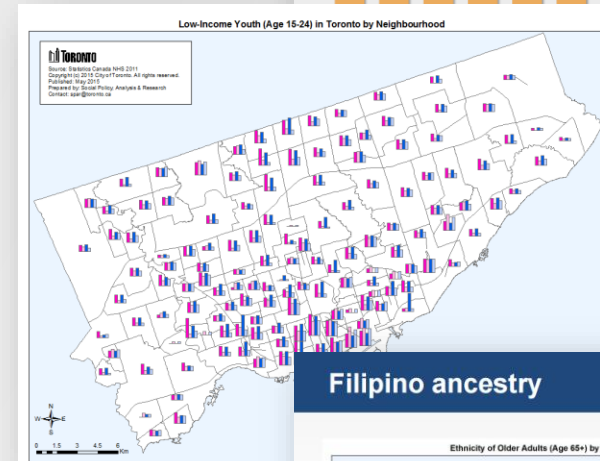
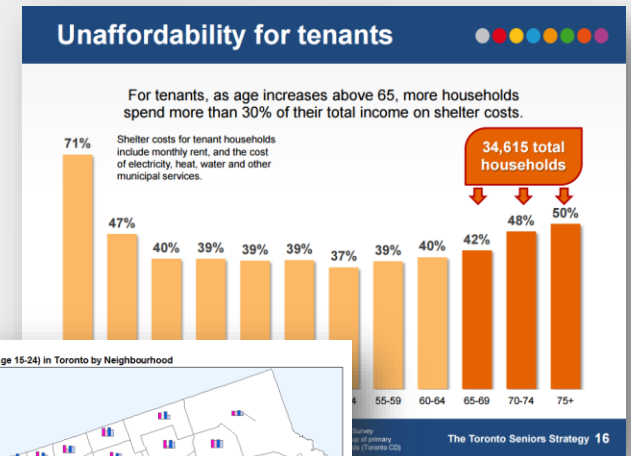
Toronto Social Atlas

- An atlas of social demographic data for the City of Toronto.
- Moving from static .pdf files to interactive online format.
- Could include much more specific data, such as individual languages, ethnic origins, and visible minority groups.



Custom Analysis

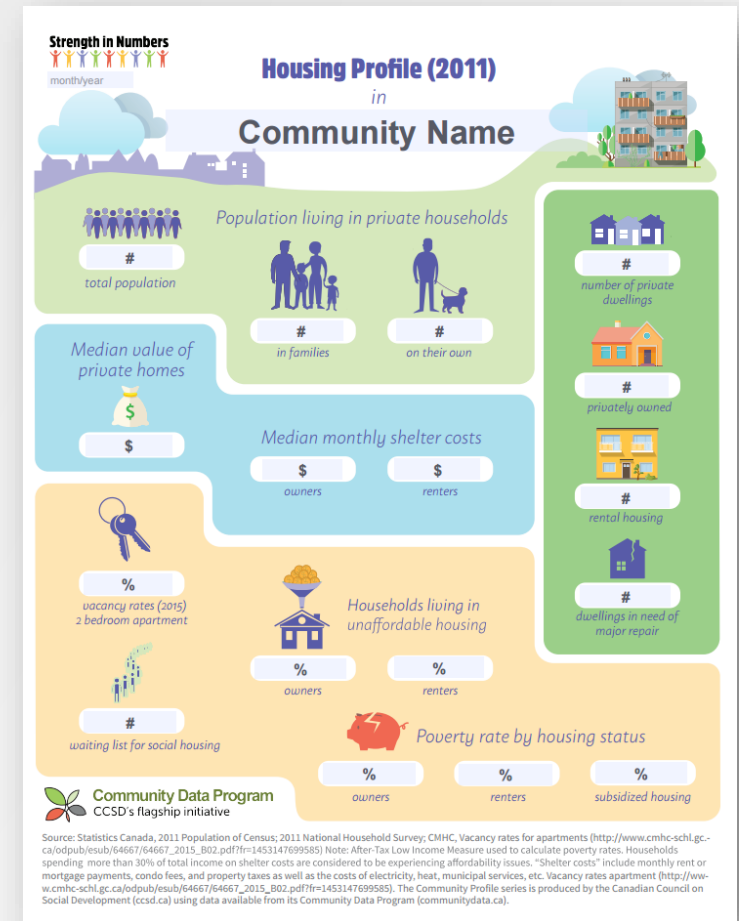
- Crosstabulated tables acquired through the Community Data Program make it possible to examine relationships for specific groups. For example:
 - How does affordability change with age for renters? *or*
 - How does low income among youth vary with visible minority and immigration status across Toronto neighbourhoods? *or*
 - Where do older adults of different ethnicities live in the city?





Community Data Program

- A gateway for municipalities and community sector organizations to access customized data tables from Statistics Canada and other providers.
- Members have access to over \$1M of socioeconomic data to monitor and report on social and economic development trends within their communities.
- Over 30 consortia across the country, 300 member organizations & 2,500 users.



Census 2016: Community Planning Session Steering Committee




Toronto Central LHIN



Census 2016

Community Planning Session

- 1) Presentation: Census Concepts—A profile of Toronto
- 2) Panel: Using Census data
- 3) Discussion: Community Priorities for Census Data



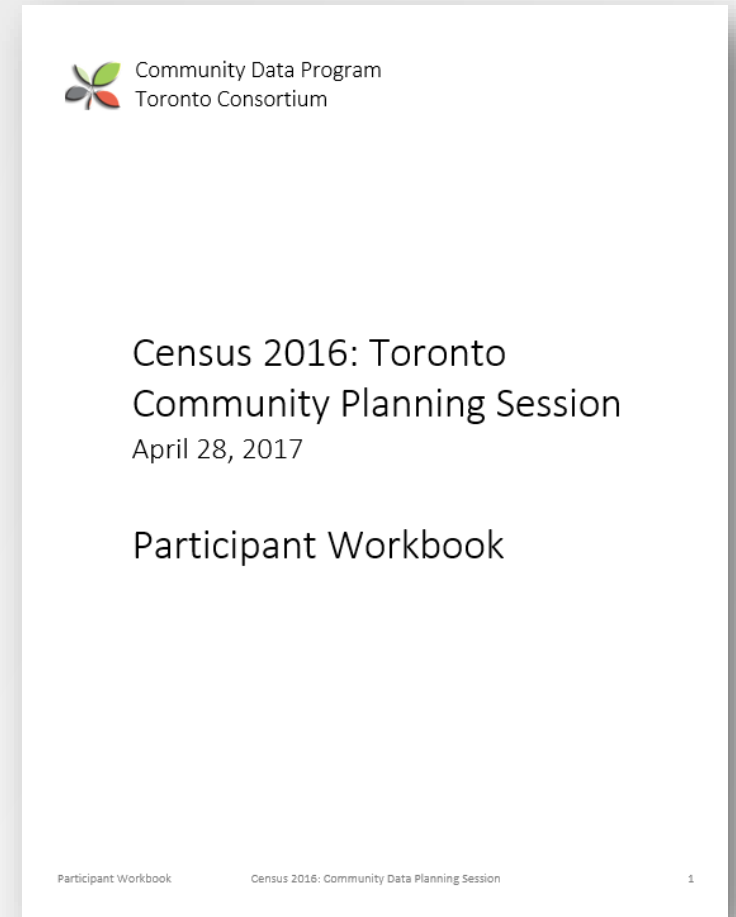
APR 28 **Census 2016: Toronto Community Planning Session**
by Community Data Program - Toronto Consortium

[DETAILS](#)

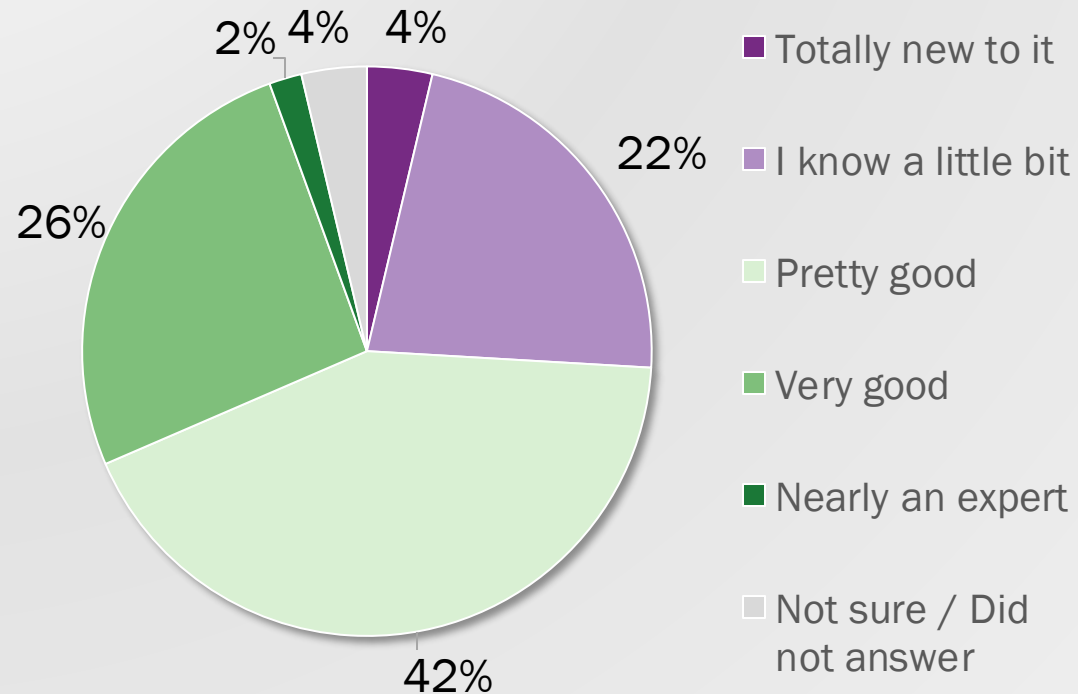
DESCRIPTION	DATE AND TIME
Do you work with a community sector organization in Toronto? Would you like to learn about what information is available in from Statistics Canada's Census of Population to help with your service planning, program development, and grant applications?	Fri, 28 April 2017 9:00 AM – 12:30 PM EDT
Come celebrate the return of long-form Census data at our Community Planning Session!	LOCATION The 519 Community Centre 519 Church Street Toronto, ON M4Y 2C9

Participant Workbooks

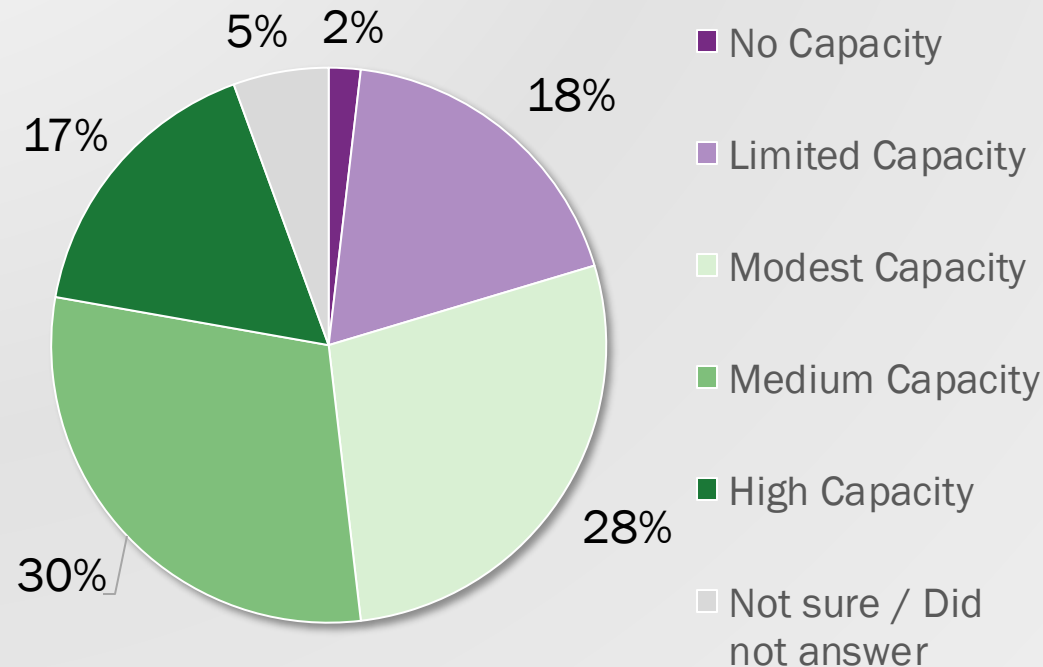
- We asked participants to follow along with the Census Concepts presentation and answer questions about the data topics covered by the Census.



Knowledge of Census data



Capacity to use Census and other quantitative data



Comparison with CDP Member Capacity Scale

Modest Capacity	50+% of CDP users
Medium Capacity	20-25% of CDP users
High Capacity	10-15% of CDP users

Census concepts: A profile of Toronto

- City of Toronto staff and Statistics Canada Statistical Information staff developed presentation together
- Based content for existing data releases on Statistics Canada's "Release and Concepts Overview, 2016 Census of Population"



Population and dwelling counts

February 8, 2017



Population and dwelling counts Key indicators

- **Population density**
Number of people per square kilometre. It is computed by dividing the total population by the land area.
- **Private dwellings and private dwellings occupied by usual residents counts**
Number of enumerated private dwellings and private dwellings occupied by usual residents on May 10, 2016, by the Census of Population.
- **Growth in dwelling counts between 2011 & 2016**
Difference, in percentage, between the number of dwellings enumerated in the 2011 and 2016 censuses

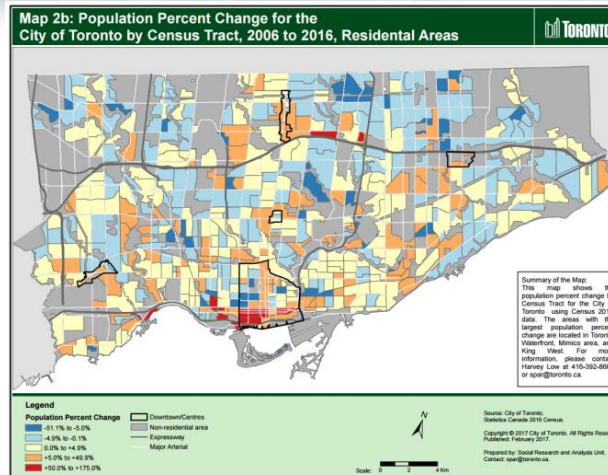
Population and dwelling counts Key indicators

- **Population counts**
Number of enumerated people on May 10, 2016, by the Census of Population. Census counts are usually lower than counts from the Population Estimates Program for the same reference date, as the latter takes into account census net undercoverage.
- **Population growth between 2011 and 2016**
Difference, in percentage, between the population enumerated in the 2011 and 2016 censuses.
- **Population share of provinces and territories**
Proportion, in percentage, of a region within a larger region.



Population and dwelling counts Population indicators

Toronto	2006	2011	2016
Total population	2,503,281	2,615,060	2,731,571
Change from previous	+0.9%	+4.5%	+4.5%
Share of Canada's population	7.9%	7.8%	7.8%
Share of Ontario's population	20.6%	20.3%	20.3%
Share of GTHA population	41.3%	39.8%	39.3%
Population per km ²	3,972.1	4,149.5	4,334.4



Population and dwelling counts Dwelling indicators

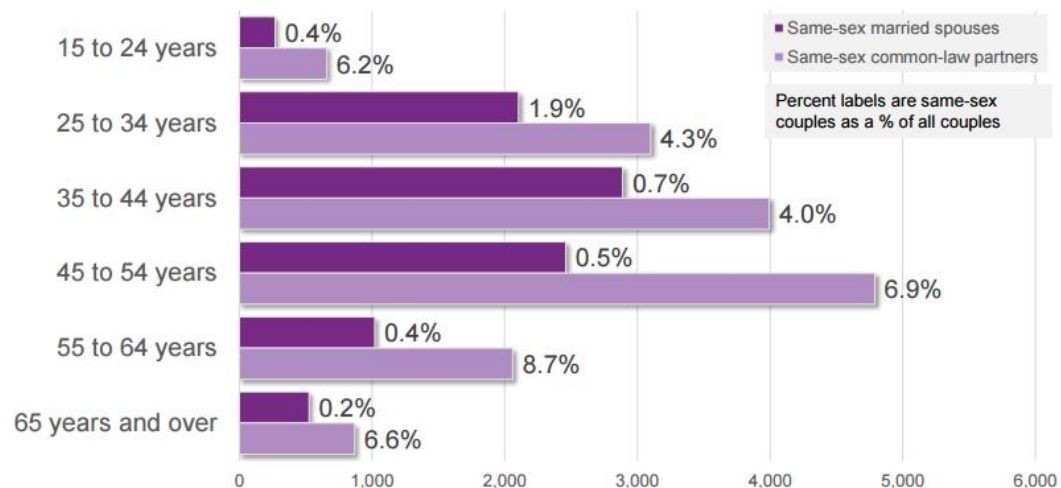
Toronto	2006	2011	2016
Total private dwellings	1,040,597	1,107,851	1,179,057
Private dwellings occupied by usual residents	979,330	1,047,877	1,112,929
Change from previous occupied dwellings	+3.8%	+7.0%	+6.2%

Identifying opportunities for non-standard data orders



Topic-based tabulations

Same-sex couples by age (2011 NHS – Toronto CMA)



33

05/16/2017

2016 Census questions not typically reported in the Census profile

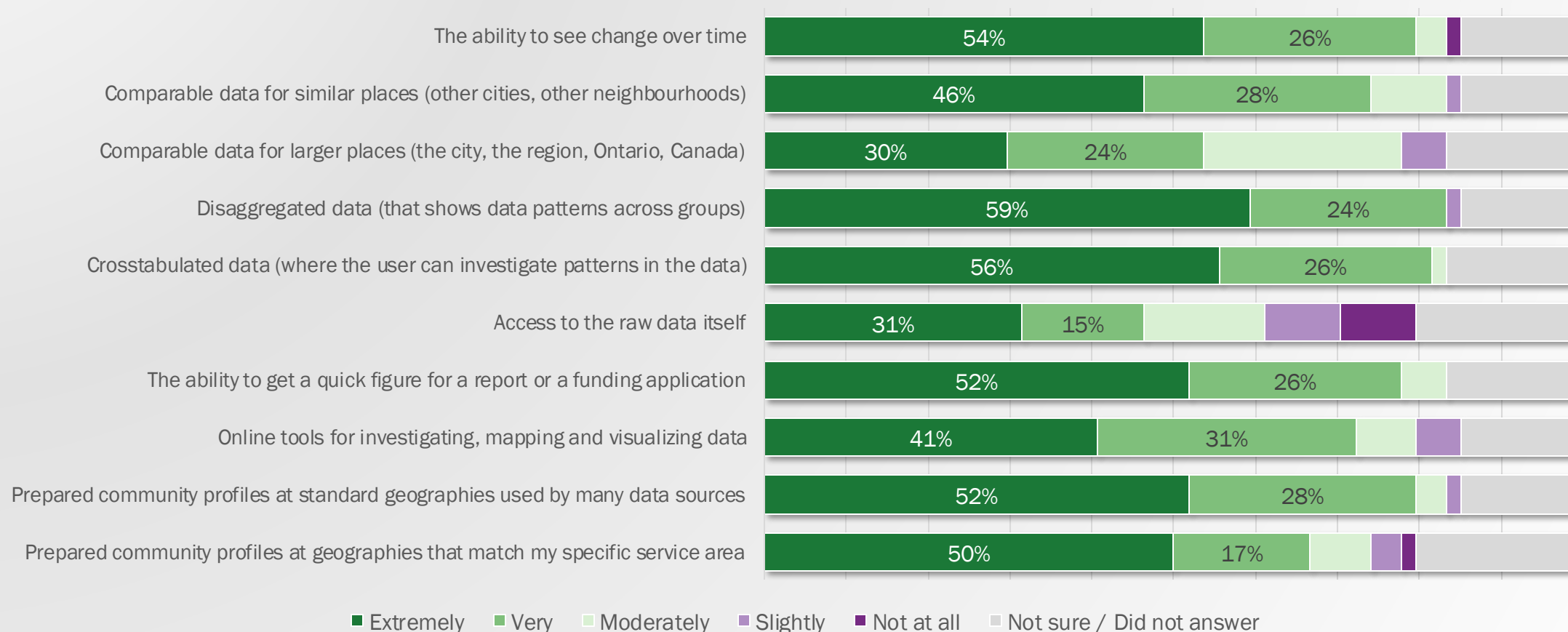
- Activity limitations
 - Seeing
 - Hearing
 - Walking, using stairs, using hands/fingers or other physical activity
 - Learning, remembering, concentrating
 - Mental health
 - Other health or long term condition
- Attendance at a school, college, CEGEP, or university
- Paying for child care in order to work
- Child/spousal payments

89

Statistics Canada • Statistique Canada

05/16/2017

How important to you are the following data considerations / data products?



Excel window: Data.xlsx - Excel

Formulas: =C2 & " " & D2 & " " & E2

	A	B	C	D	E	F
1	Download the following files from the CDP					
2	http://communitydata.ca/content/census-profile-2006					
3	http://communitydata.ca/content/census-profile-2011					
4	http://communitydata.ca/content/nhs-profile-2011					
5						
6						
7						
8						
9						
10	This template was based on the CSD level of geography and has not been tested					
11				Population in 2001	All Dwellings	
12	Type the name of the area here:	Toronto				
13	Type the name of the province here:	Ontario				
14	Canada data here:	Canada				
15						
16						
17						

Navigation: Instructions | 2006 | 2011Census | 2011NHS | 2016

PowerPoint window: Presentation1.pptx - PowerPoint

Microsoft PowerPoint Security Notice

Microsoft Office has identified a potential security concern.

This presentation contains links to other files.

- If you update the links, PowerPoint will attempt to retrieve the latest information.
- If you don't update the links, PowerPoint will use the previous information.

Note that file links can be used to access and share confidential information without your permission and possibly perform other harmful actions. Do not update the links if you do not trust the source of this presentation.

[More information](#)

Update Links | Cancel

Microsoft PowerPoint interface showing a slide with a table and a screenshot of Microsoft Excel showing the source data for the table.

Slide Content (Table 1):

Toronto	2006	2011	2016
Total population	2,503,281	2,615,060	2,731,571
Change from previous	0.9%	4.5%	4.5%
Share of Canada population	7.9%	7.8%	7.8%
Share of Ontario population	20.6%	20.3%	20.3%
Share of GTHA population		39.8%	39.3%
Population per km ²	3,972.1	4,149.5	4,334.4

Slide Content (Table 2):

Toronto	2006	2011	2016
Total private dwellings	1,040,597	1,107,851	1,179,057
Private dwellings occupied by usual residents	979,440	1,047,877	1,112,929
Change from previous Census	3.8%	7.0%	6.2%

Slide Content (Table 3):


Toronto	2006	2011	2016
Total private dwellings	1,040,597	1,107,851	1,179,057
Private dwellings occupied by usual residents	979,440	1,047,877	1,112,929
Change from previous Census	3.8%	7.0%	6.2%

Excel Screenshot (Data.xlsx - Excel):

Formula bar: B11 = '2006'!B2

Toronto	2006	2011	2016
Total population	2,503,281	2,615,060	2,731,571
Change from previous	0.9%	4.5%	4.5%
Share of Canada population	7.9%	7.8%	7.8%
Share of Ontario population	20.6%	20.3%	20.3%
Share of GTHA population		39.8%	39.3%
Population per km ²	3,972.1	4,149.5	4,334.4
Toronto	2006	2011	2016
Total private dwellings	1,040,597	1,107,851	1,179,057
Private dwellings occupied by usual residents	979,440	1,047,877	1,112,929

Panel: Using Census data



United Way
Toronto & York Region

How to use evidence from census and other data sources to tell your change story?

Case study: Building Strong Neighbourhoods Strategy

Mihaela Dinca-Panaitescu, Research, Public Policy & Evaluation

Toronto Community Planning Session
April 28, 2017


USING DATA FOR
COMMUNITY PLANNING
AND ADVOCACY

Beth Wilson, Senior Researcher
Social Planning Toronto
Community Data Forum
April 2017

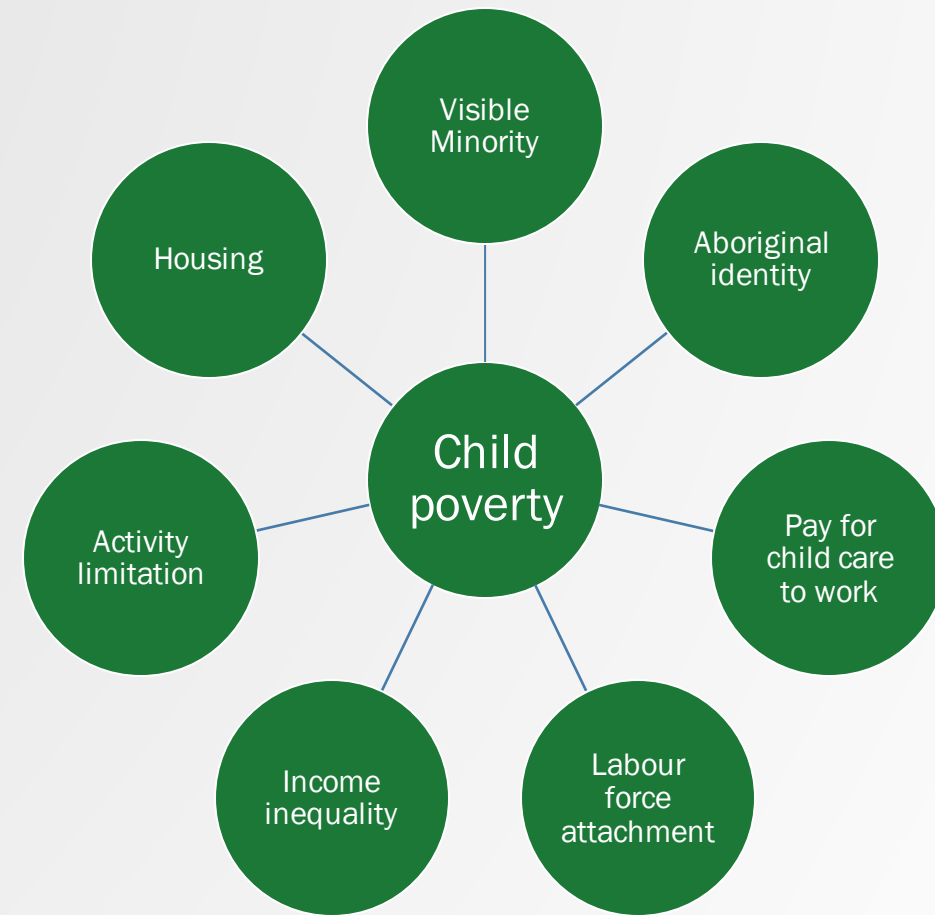


City of Toronto
Social Policy, Analysis & Research Section

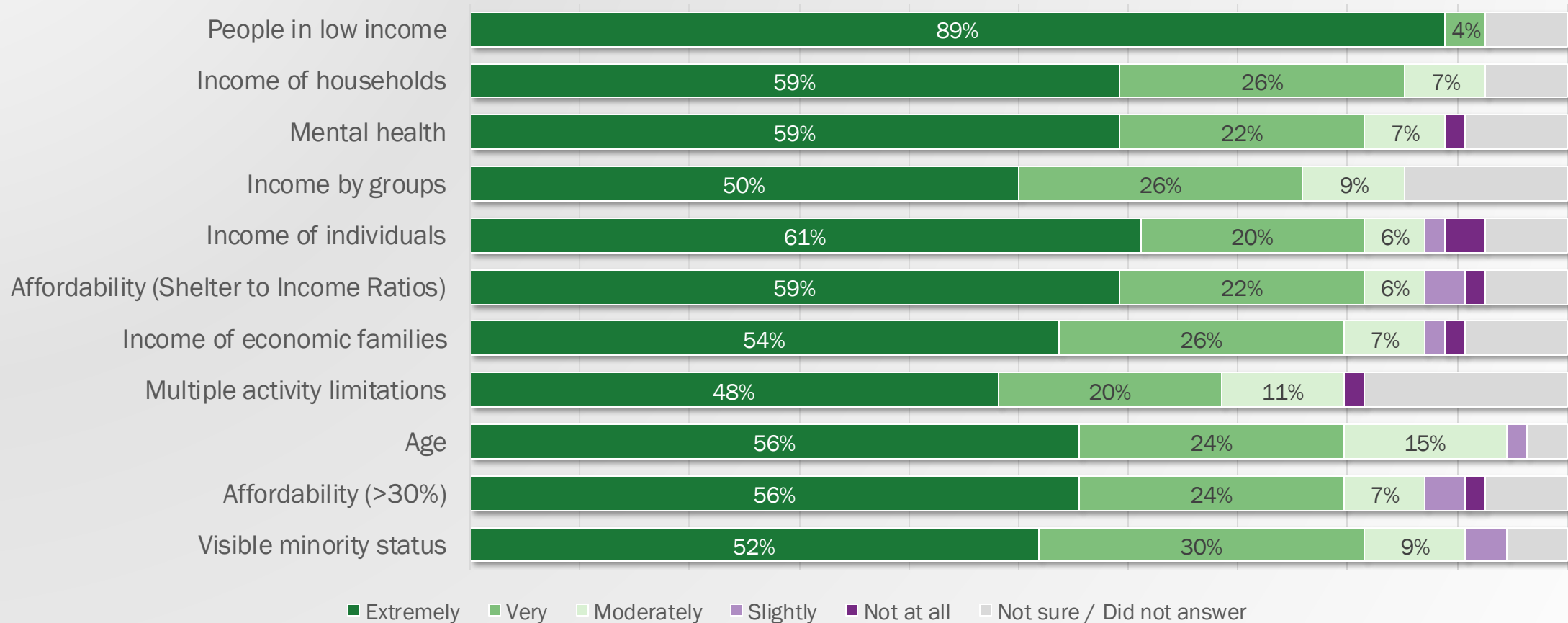
Census Data Products



Discussion: Priorities for Census Data



Census data points rated “most important to me”



Data opportunity:

Activity difficulties

- This data is gathered from a Census question that is not typically reported publicly. It is used to identify candidates for follow up surveys such as the Canadian Survey on Disability.
- The question(s) used to gather this information were changed in 2016, presenting some challenges but also some opportunities.

Activity Difficulties/Limitations

2011 National Household Survey Question

- Question 7:
 - For persons who have difficulty hearing, seeing, communicating, walking, climbing stairs, bending, learning, or any similar activity, mark either ‘Yes, sometimes’ or ‘Yes, often’ as appropriate. For persons who do not have difficulty with these activities, mark ‘No’.
- Question 8:
 - Part (a) For persons with a physical or mental condition or health problem that reduces the amount or the kind of activity they can do at home, mark either ‘Yes, sometimes’ or ‘Yes, often’ as appropriate. For persons who do not have such a condition, mark ‘No’.
 - Part (b) For persons with a physical or mental condition or health problem that reduces the amount or the kind of activity they can do at work or at school, same answer options
 - Part (c) For persons with a physical or mental condition or health problem that reduces the amount or the kind of activity they can do in other activities, same answer options

Activity Difficulties/Limitations

2016 Census Question

STEP E - Question identifier 11: Does this person have any:

- a) difficulty seeing (even when wearing glasses or contact lenses)?
- b) difficulty hearing (even when using a hearing aid)?
- c) difficulty walking, using stairs, using his/her hands or fingers or doing other physical activities?
- d) difficulty learning, remembering or concentrating?
- e) emotional, psychological or mental health conditions (e.g., anxiety, depression, bipolar disorder, substance abuse, anorexia, etc.)?
- f) other health problem or long-term condition that has lasted or is expected to last for six months or more? Exclude: any health problems previously reported above.

Answer options for all questions a-f:

1: No; 2: Sometimes; 3: Often; 4: Always

Activity Difficulties: Table purchase proposal

- We propose a cross-tab of:
 - Age (At least 10 year age groups for 45+)
 - Sex
 - Response to difficulty seeing (all with count by response category: no, sometimes, often, always)
 - Response to difficulty hearing
 - Response to difficulty walking, using stairs, using hands/fingers or other physical activities
 - Response to difficulty learning, remembering, or concentrating
 - Response to emotional, psychological or mental health conditions
 - Response to other health problem or long-term condition

This cross-tab would allow us to investigate the overall pattern of responses, and the degree of crossover of responses. A range of geographic scales would be helpful to investigate suppression. Perhaps StatCan can also work with us on this to find the right balance between the geographic scale and data suppression.

Data opportunity:

People living in collective dwellings

- Our community stakeholders expressed a clear desire to investigate opportunities for better understanding the population living in collective dwellings.
- Webinar by Doug Norris made an interesting point—linking of Census to T1FF should mean income data for people living in collective dwellings is available.
- Table: [Type of Collective Dwelling \(16\), Age \(20\) and Sex \(3\) for the Population in Collective Dwellings of Canada, Provinces and Territories, 2016 Census](#)

Data needs:

Improved groupings on key socio-demographic categories

- Add expanded age groups to address information needs for a population that is aging and living longer
- Add expanded income groups to include a broader range of income categories over \$100k/year
- Find more opportunities to cross tab visible minority data and aboriginal identity data. Feedback from our members is that VM data was not downloaded where differentiation between VM groups was not possible.



Community Data Program Toronto Consortium

Thank you!