



Simcoe County

Community Data Program Annual Meeting

May 25, 2017

Irena Pozgaj-Jones, Program Supervisor
Olga Belanovskaya, Research Analyst

simcoe.ca

Overview



- 20,000 Homes Campaign
- CDP data use in Simcoe County



Research at the County of Simcoe



- Social and Community Services Division
 - Children and Community Services
 - Local Immigration Partnership
 - Social Housing
 - Ontario Works

- Custom Geographies are coming!
 - EDI boundaries
 - Schoolboard
 - Health Unit
 - NSM LHIN (North Simcoe Muskoka)



Simcoe 20,000 Homes Campaign



- A national movement of communities, mobilizing together to house 20,000 of Canada's most vulnerable people by July 1, 2018

Led by:

- Nationally: Canadian Alliance to End Homelessness
- Locally: Simcoe County Alliance to End Homelessness (SCATEH)



Simcoe County Registry Week



- 120+ volunteers and professional staff across Simcoe County surveyed people experiencing homelessness in 2016
- Data Collection Tool: VI-SPDAT
Vulnerability Index - Service Prioritization Decision Assistance Tool
- Two reasons for collecting data:
 - ▶ Case management
 - ▶ Aggregate data reporting
- Survey participants:
People experiencing or at imminent risk of homelessness
- 292 completed surveys



Some Key Findings



35%

- (100 people) were experiencing high acuity

43%

- (125 people) experiencing chronic homelessness

22%

- self-identified aboriginal ancestry

128

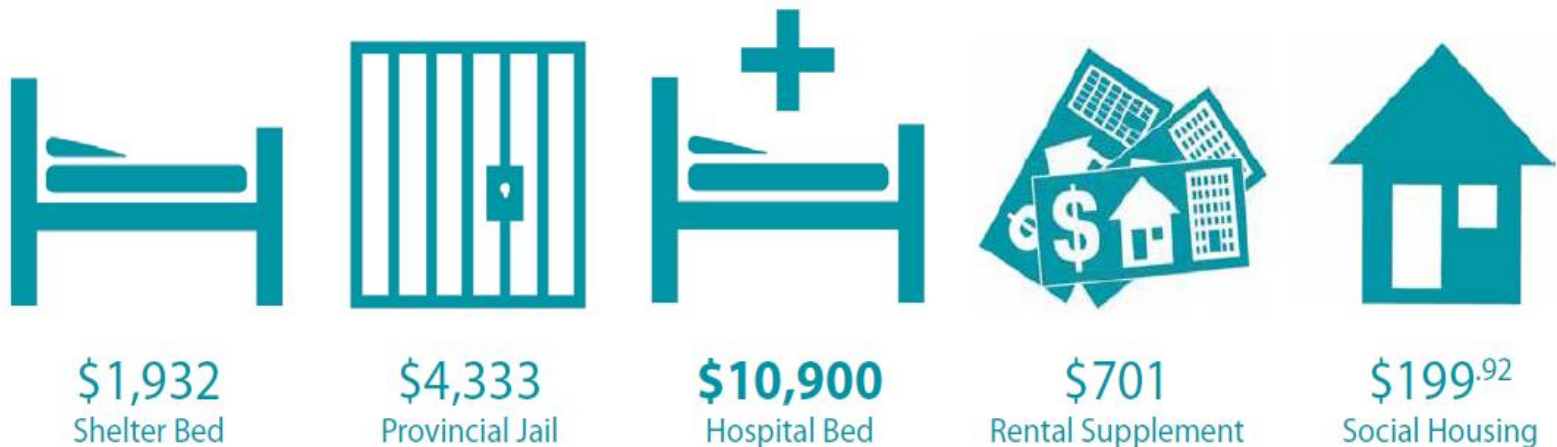
- participants visited the emergency department 478 times in the past year

Key Messages



- Information from Registry Week has provided a better understanding of homelessness across Simcoe County
- Housing First helps the most vulnerable people experiencing homelessness (high acuity and/or chronic homelessness) by providing housing, then additional supports and services

Average Monthly Cost of housing someone while homeless:

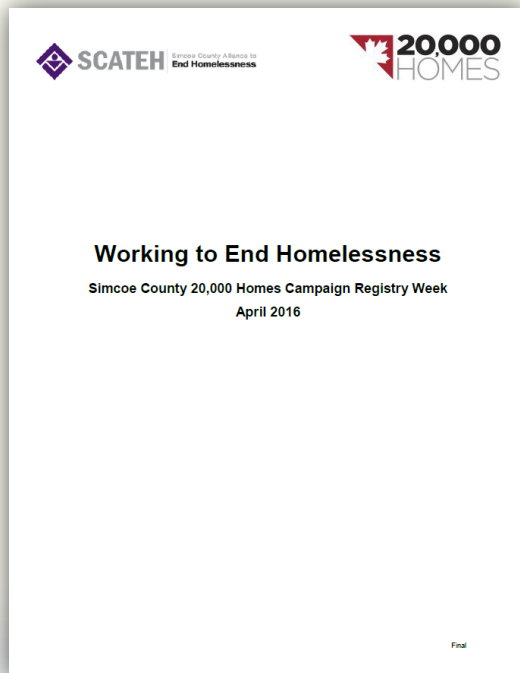


Source: Cost of Homelessness, 2012, Homeless Hub

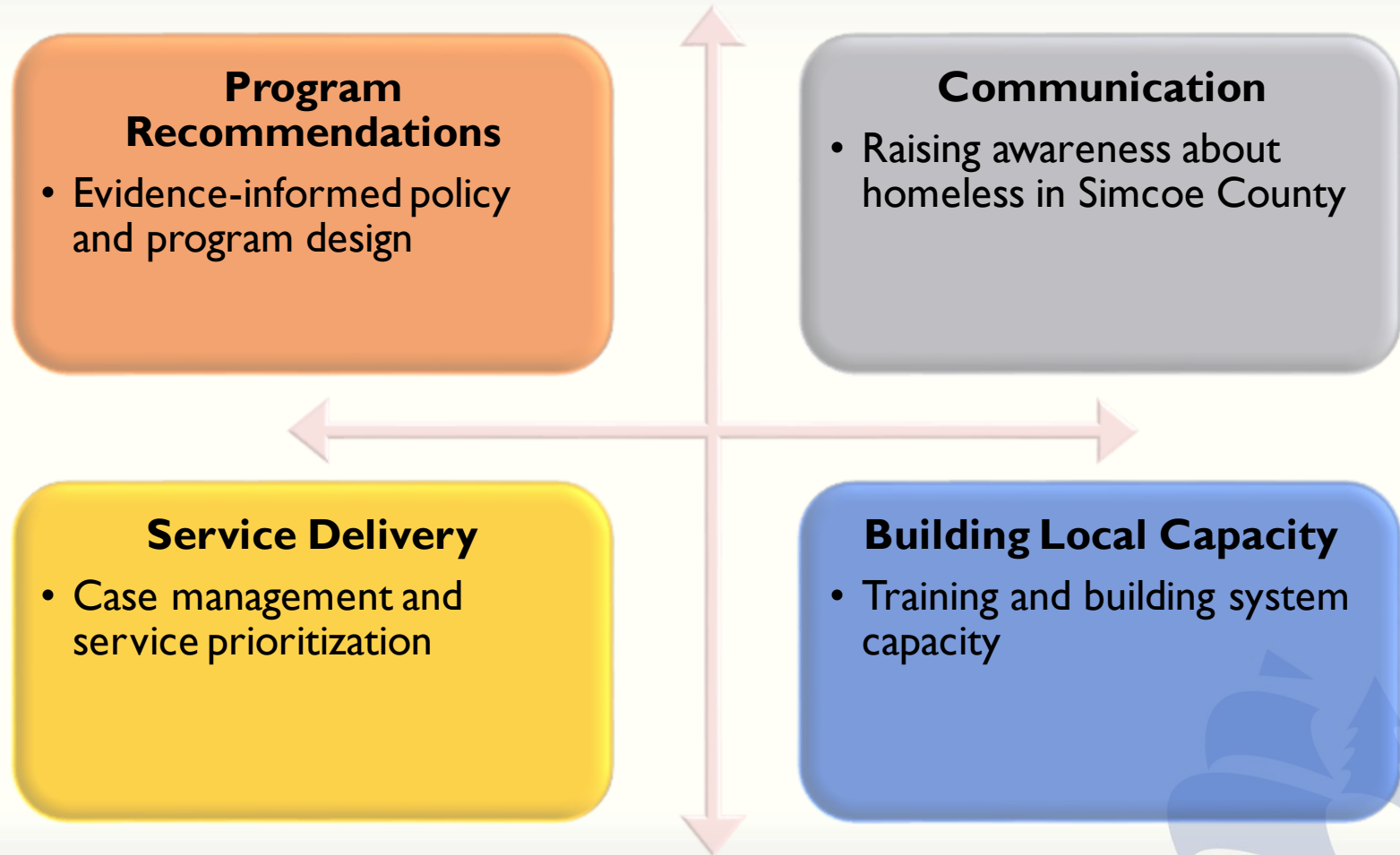
Information Dissemination



- Community Presentations
- Deputations
- Final Reports



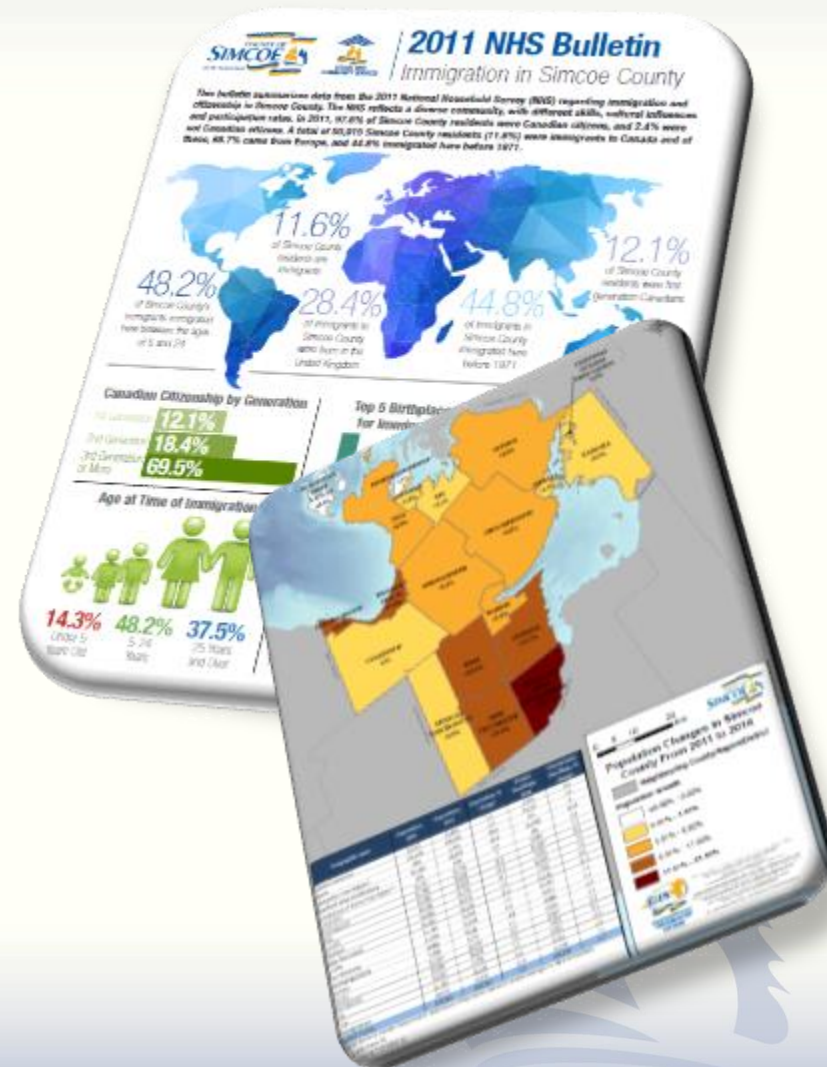
Our Action Plan



Community Profiles



- Profiles of specific population groups using Target Group Profiles (CDP)
- Thematic Maps using data available on local areas of geography



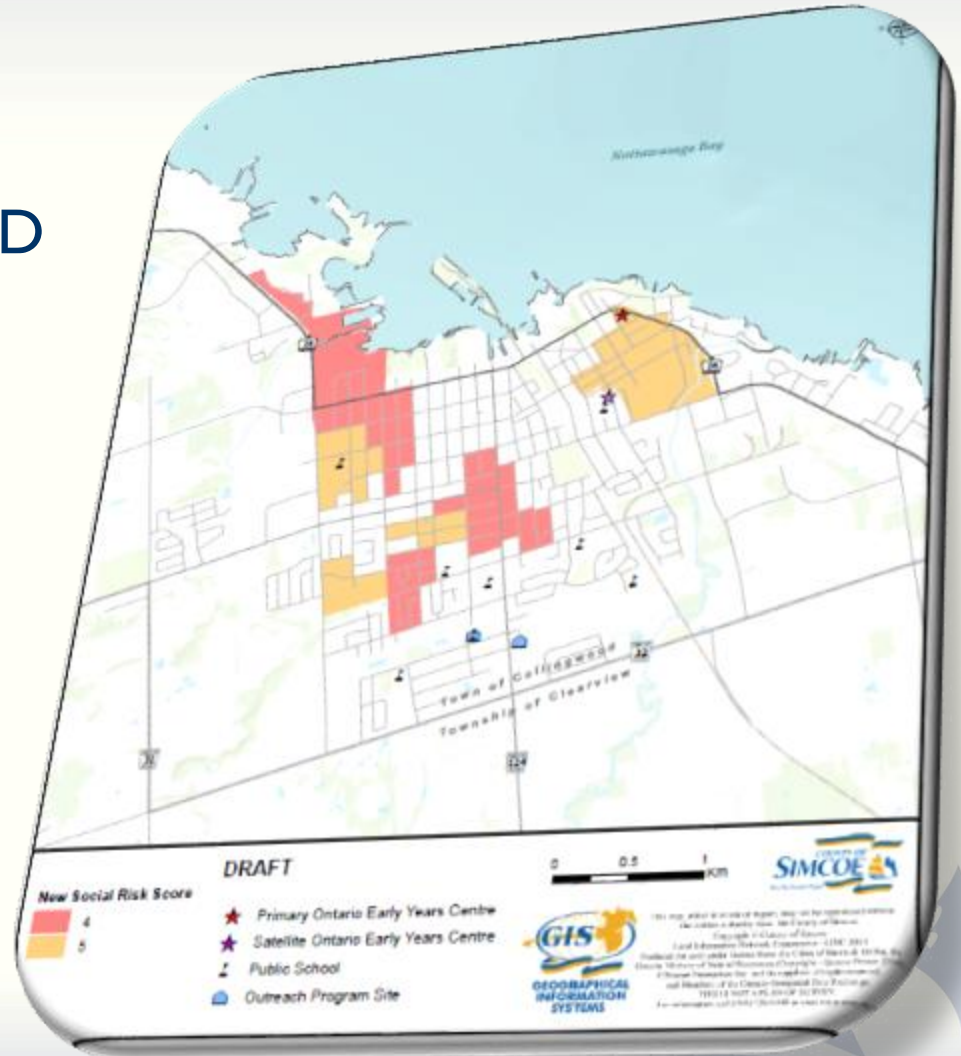
OEYCFC Social Risk Score Maps



- Incorporates Early Development Instrument vulnerability index AND social risk score

- **Social Risk Score**

- Low income
- Education
- Lone Parents
- Mobility
- Language
- Employment



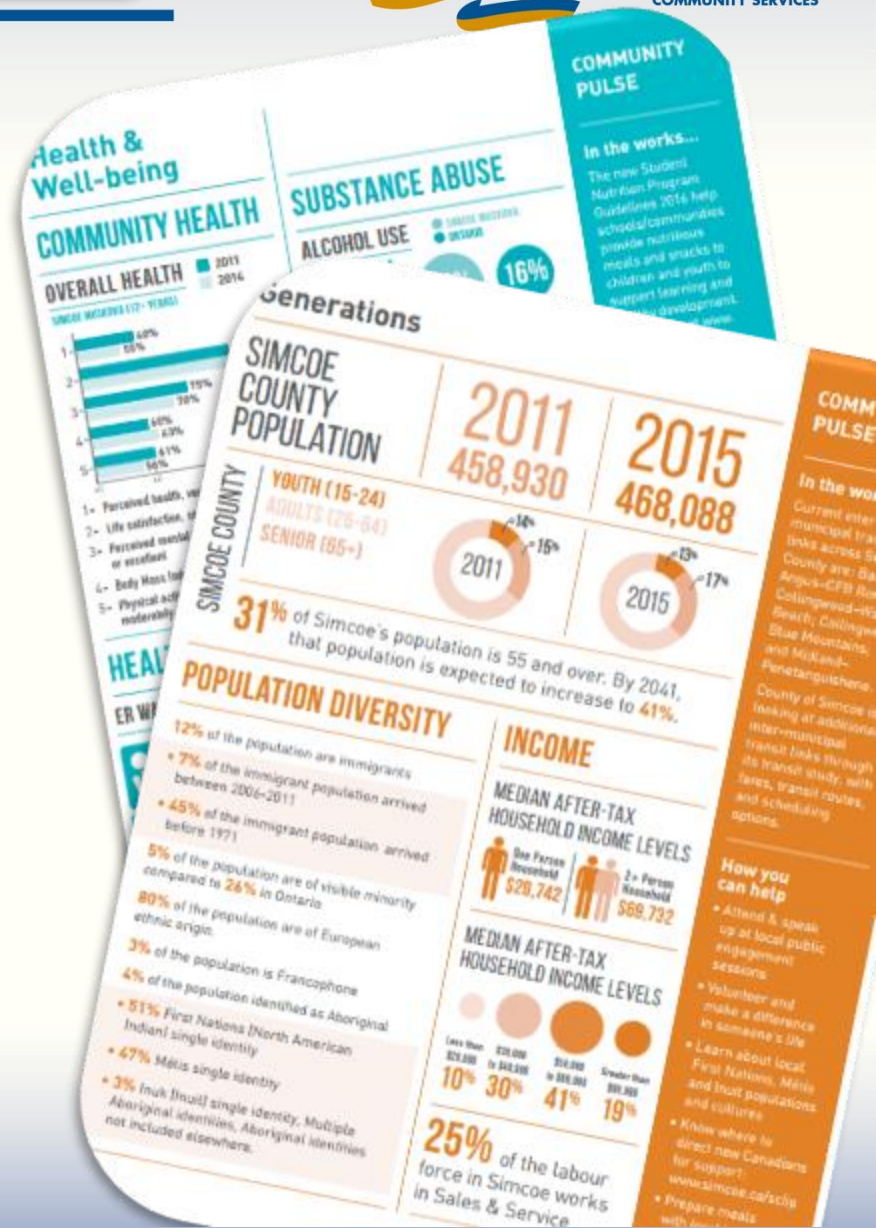
Vital Signs 2016

SIMCOE MUSKOKA'S

VitalSigns[®]



- United Way of Simcoe Muskoka
- Simcoe Muskoka's VitalSigns[®] report is a community snapshot of the regional quality of life and the community vitality
- Diverse datasets available through CDP website were used to complete the report





www.simcoe.ca/dataconsortium

Irena Pozgaj-Jones, Program Supervisor

irena.pozgaj-jones@simcoe.ca

705-722-3132 x1039

Olga Belanovskaya, Research Analyst

olga.belanovskaya@simcoe.ca

705-722-3132 x1076

