

City of Toronto

Use of the Community Data Program (CDP)



Harvey Low
Social Development Finance & Administration Division,
Social Research & Analysis Unit
June 19



Toronto CITY and COMMUNITY Members

CITY OF TORONTO:

- Children's Services
- Economic Development Culture & Tourism
- Employment & Social Services
- Library
- Parks Forestry & Recreation
- Police Services
- Public Health
- Shelter Housing
- Social Development & Finance
- Social Housing
- Strategic & Corporate Policy

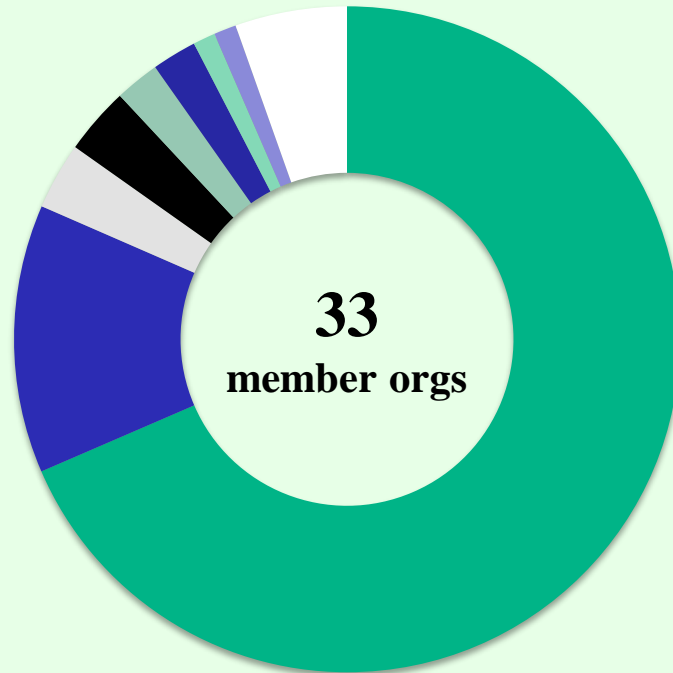
COMMUNITY

Access Alliance Multicultural Health & Community Services
Agincourt Community Services
Canadian Centre for Victims of Torture
Canadian Mothercraft Society
Centre for Addiction & Mental Health (CAMH)
Centre for Research on Inner City Health (CRICH)
Centre Francophone de Toronto
Children's Aid Society of Toronto
Community Action Partners/Public Interest
Daily Bread Food Bank
Davenport Perth Neighbourhood Centre
Family Service Toronto
MaRS Discovery District

Mt. Sinai Hospital
Pathways to Education RPCHC
Planned Parenthood Toronto
Regent Park Community Health Centre
Scarborough Centre for Healthy Communities
(Formerly West Hill Community Services)
Scarborough West Community Health - Satellite
Social Planning Toronto
South Riverdale Community Health Centre
St. Michael's Hospital
Toronto Central Community Care Access Centre
Toronto Central Local Health Integration Network
Toronto Community Foundation
Toronto District School Board
Toronto East General Hospital
Toronto Workforce Innovation Group
United Way of Greater Toronto
Wellesley Institute
Women's Health in Women's Hands
WoodGreen Community Services

Membership Profile

Toronto CDP Revenue by Type of Organization



- City of Toronto
- Health
- Education/Employment
- Multi-service
- Child/Youth
- Immigrant/Settlement
- Counselling
- Food/Clothing
- Other

Number of Members in Toronto
33

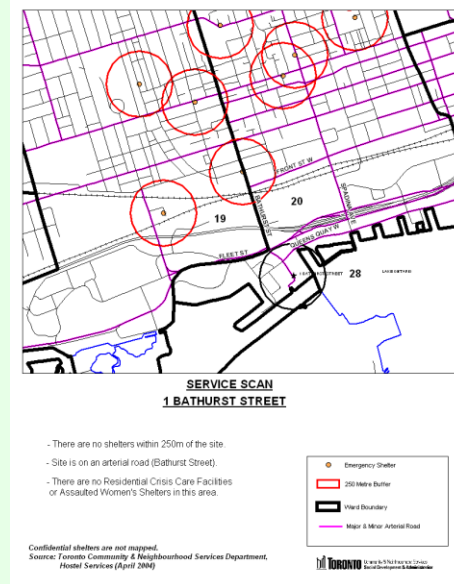
Members by Organization Type

City of Toronto	1
Health	14
Education/Employment	3
Multi-Service	3
Children/Youth	2
Immigrant/Settlement	2
Counselling	1
Food/Clothing	1
Other	6

SOME TRADITIONAL EXAMPLES

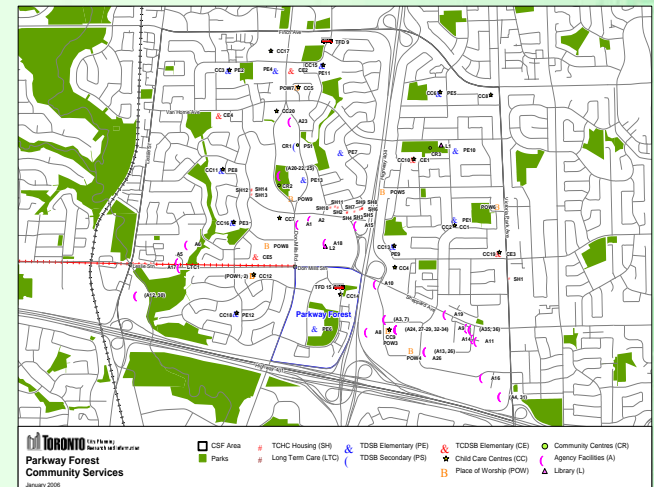
Site Plan Evaluation & Environmental Assessments

- Homes for the Aged
- Emergency Hostels
- Social Housing



Urban Planning & Community Studies

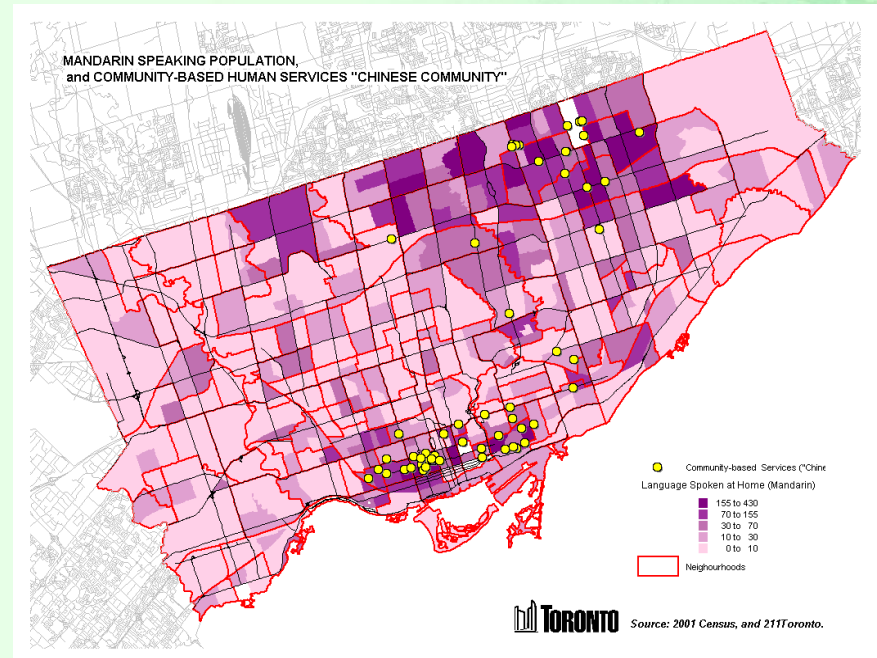
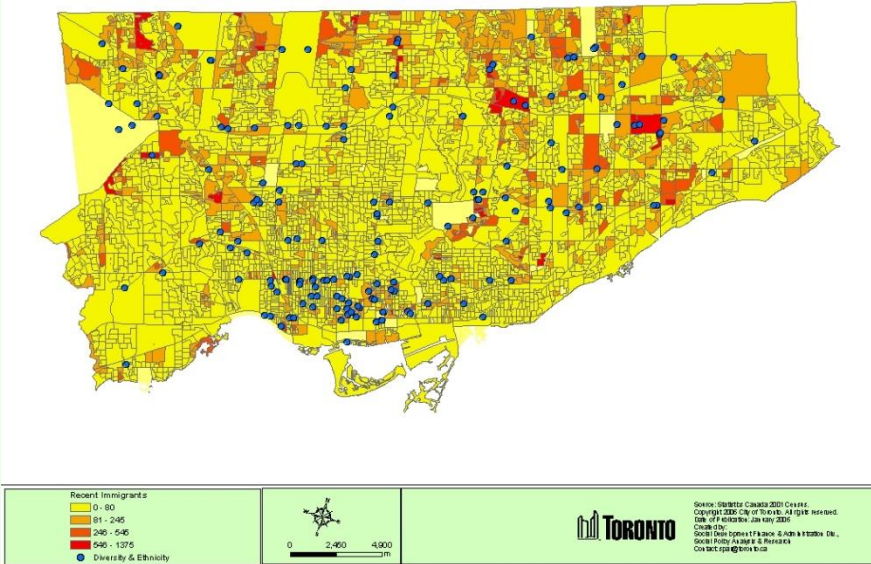
- Danforth Avenue
- York University Lands
- Victoria Parks Station Study



SOME TRADITIONAL EXAMPLES

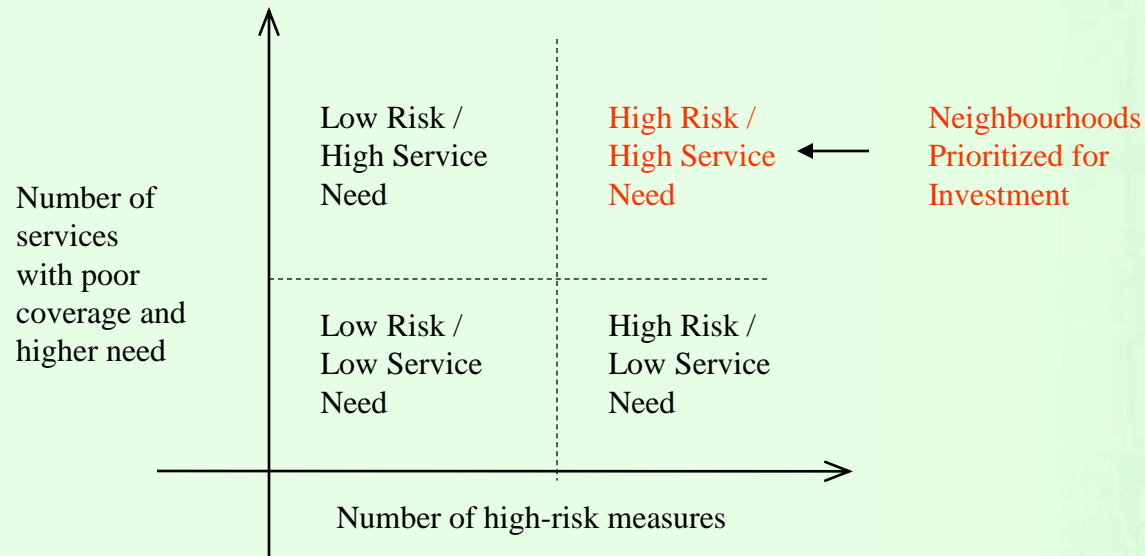
Service Planning (integrating service mapping with demographics)

Geographic Distribution of Recent Immigrants in Toronto

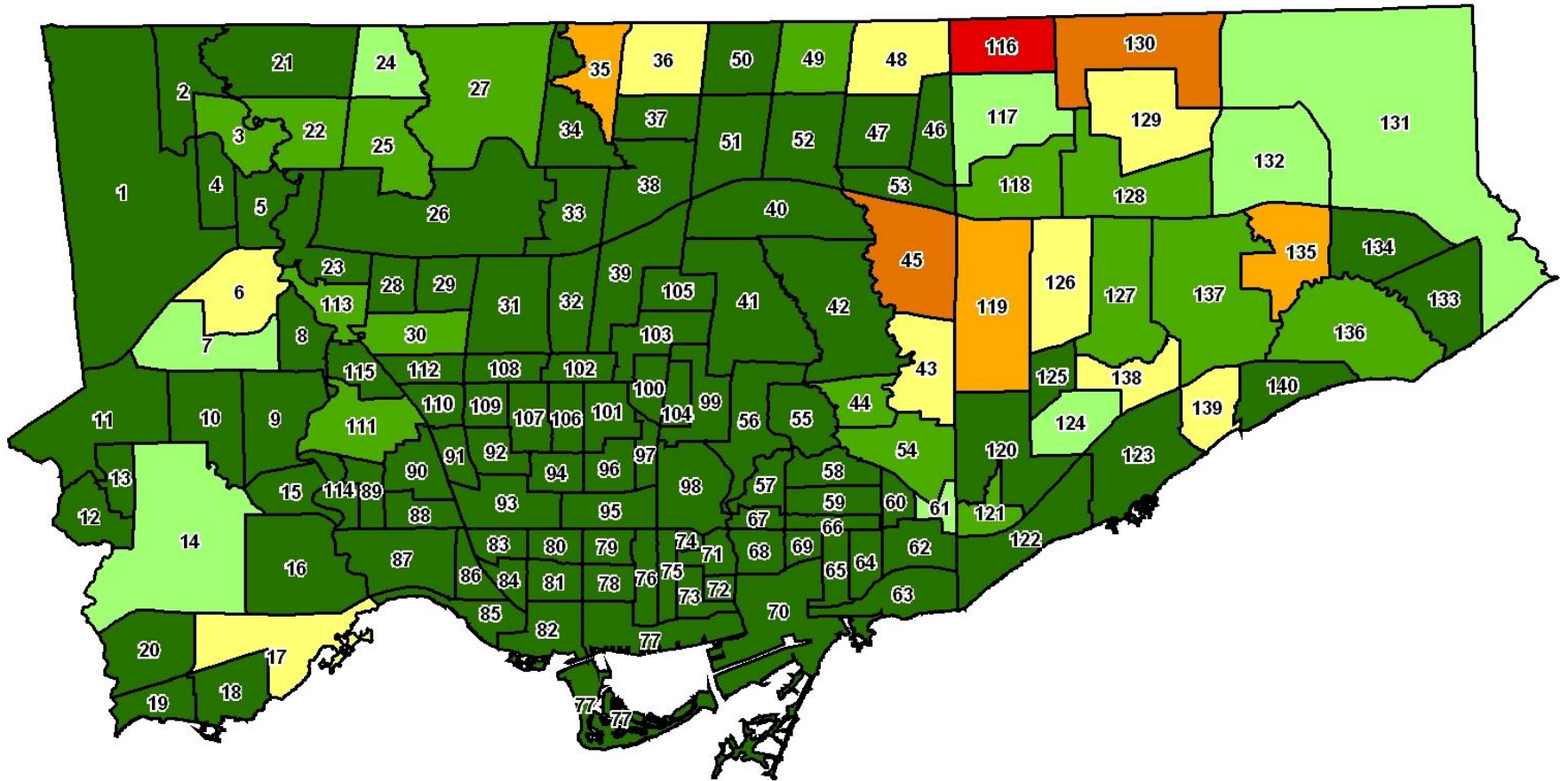


STRATEGIC POLICY EXAMPLE:
“Toronto’s Priority Improvement Neighbourhoods”

NEIGHBOURHOOD INVESTMENT FRAMEWORK:



Poorer Coverage and Higher Need



Legend

Number of Poorer Access Services

	N/A		3 Services
	1 Service		4 Services
	2 Services		5 Services
			6 Services

Notes: Numbers on map refer to neighbourhood #, not coverage. Refer to neighbourhood map in the Appendix for proper names. There is no data for the 905 area, and this may affect coverage ratings in border areas.



0 0.5 1 2 3 4 Km



Source: City of Toronto, Social Policy Analysis & Research
Copyright 2005 City of Toronto. All Rights Reserved.
Date of Publication: April 2005
Contact: spar@toronto.ca

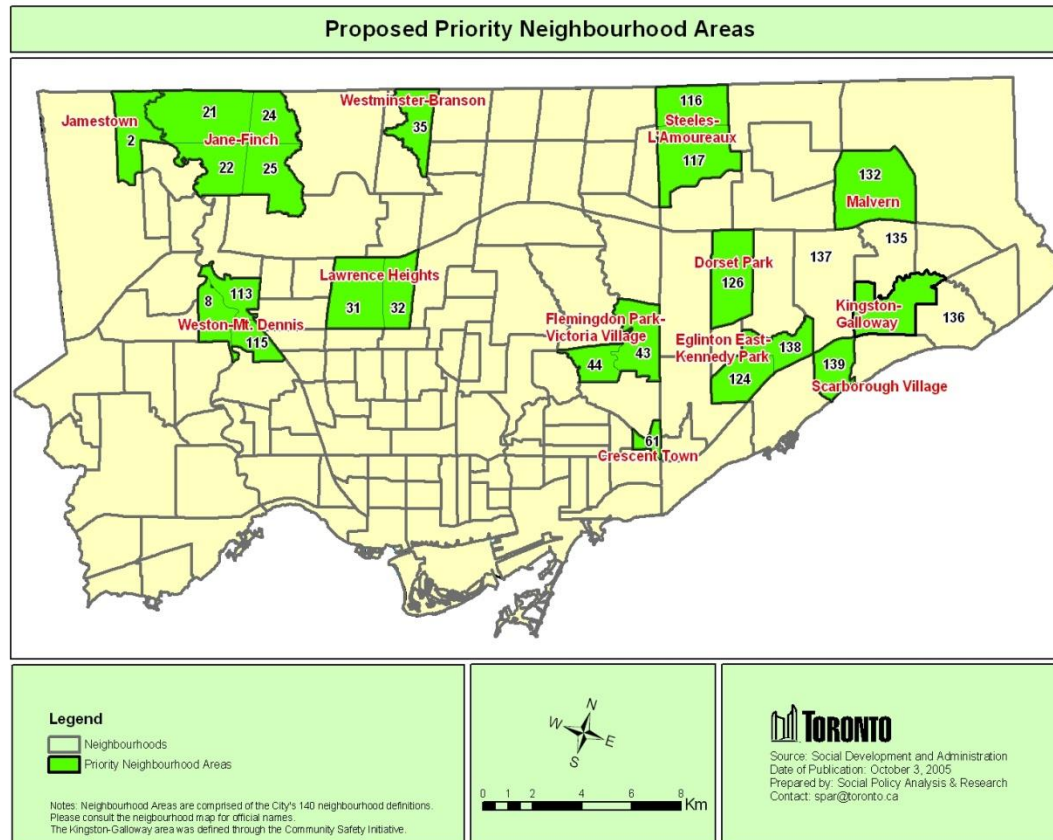
Notes: This is part of the Research Strategy of the Strong Neighbourhoods Task Force.

PRIORITY NEIGHBOURHOODS

- Now compare this to 11 socio-economic indicators (as identified in background research report #3):
 1. median household income
 2. % pop'n spending 30%+ on shelter costs
 3. % pop'n age 25+ unemployed
 4. % students passing High School Literacy test
 5. % pop'n with college or university qualifications
 6. % pop'n attaining less than grade 9 education
 7. % dwellings requiring major repair
 8. # low birth weight babies per 1000 live births
 9. % pop'n without English or French language skills
 10. % pop'n that are recent immigrants
 11. % pop'n by mobility status 1 year ago
- Map on next slide shows the number of times each indicator was 20% worse than city average.

PRIORITY NEIGHBOURHOODS

- These neighbourhoods are now combined where geographically appropriate into “**13 Priority Areas**”.



PRIORITY NEIGHBOURHOODS - MONITORING

BENCHMARK MATRIX: Comparisons of Areas to City Average

BENCHMARK MATRIX

DIFFERENCE TO REST OF TORONTO

PRIORITY AREA	JAMESTOWN	JANE-FINCH	WESTON MOUNT-DENNIS	WESTMINSTER-BRANSON	LAWRENCE HEIGHTS	FLEMINGDON-VICTORIA VILLAGE	STEELES L'AMOREAUX	CRESCENT TOWN	DORSET PARK	EGLINTON E.-KENNEDY PARK	SCARBOROUGH VILLAGE	MALVERN	KINGSTON-GALLOWAY	13 PRIORITY AREAS
% Identified as "gang alert" in Youth Offender Tracking System	SIMILAR	MUCH HIGHER	MUCH HIGHER	MUCH LOWER	LOWER	MUCH LOWER	MUCH LOWER	MUCH LOWER	MUCH LOWER	HIGHER	LOWER	MUCH LOWER	LOWER	SIMILAR
% convicted for violence, weapons, firearms offences in Youth Offender Tracking System	MUCH HIGHER	LOWER	HIGHER	LOWER	MUCH HIGHER	MUCH LOWER	LOWER	LOWER	MUCH LOWER	SLIGHTLY LOWER	LOWER	MUCH LOWER	LOWER	SLIGHTLY LOWER
% convicted for narcotics offences in Youth Offender Tracking System	MUCH LOWER	MUCH LOWER	SIMILAR	SLIGHTLY HIGHER	MUCH LOWER	LOWER	LOWER	HIGHER	LOWER	LOWER	MUCH LOWER	SLIGHTLY LOWER	MUCH LOWER	LOWER
% TDSB Students Applying to University	LOWER	LOWER	LOWER	SIMILAR	SIMILAR	SIMILAR	HIGHER	SLIGHTLY LOWER	SIMILAR	SLIGHTLY LOWER	SLIGHTLY LOWER	SIMILAR	SLIGHTLY LOWER	SLIGHTLY LOWER
% TDSB Students Applying to College	MUCH HIGHER	HIGHER	SIMILAR	SIMILAR	SIMILAR	SIMILAR	SIMILAR	SIMILAR	SLIGHTLY HIGHER	SIMILAR	HIGHER	HIGHER	HIGHER	SLIGHTLY HIGHER
% TDSB Students that Dropped-out of HS	MUCH HIGHER	HIGHER	MUCH HIGHER	SLIGHTLY LOWER	HIGHER	SIMILAR	LOWER	SIMILAR	SLIGHTLY LOWER	SIMILAR	SLIGHTLY HIGHER	SIMILAR	SIMILAR	SLIGHTLY HIGHER
% Exiting JOB CONNECT Employed 05-06	SIMILAR	SIMILAR	SIMILAR	SLIGHTLY HIGHER	SLIGHTLY HIGHER	SIMILAR	SIMILAR	SIMILAR	SLIGHTLY LOWER	SIMILAR	SLIGHTLY LOWER	SLIGHTLY LOWER	LOWER	SIMILAR
% Exited JOB CONNECT to further Education/Training	HIGHER	HIGHER	SLIGHTLY LOWER	LOWER	HIGHER	SLIGHTLY LOWER	SLIGHTLY LOWER	SLIGHTLY HIGHER	HIGHER	SLIGHTLY HIGHER	SIMILAR	SLIGHTLY HIGHER	SLIGHTLY LOWER	SIMILAR
% Exiting SUMMER JOBS SERVICE Employed 05-06	MUCH LOWER	SIMILAR	MUCH LOWER	MUCH HIGHER	LOWER	MUCH HIGHER	MUCH HIGHER	MUCH LOWER	SIMILAR	MUCH HIGHER	SLIGHTLY LOWER	MUCH HIGHER	HIGHER	HIGHER
% Exited SUMMER JOBS SERVICE to further Education/Training	SIMILAR	SIMILAR	SIMILAR	SIMILAR	SIMILAR	SIMILAR	SIMILAR	SIMILAR	SIMILAR	SIMILAR	SIMILAR	SIMILAR	SIMILAR	SIMILAR
Total Employment per 1000 Pop'n age 15-74	MUCH LOWER	HIGHER	SLIGHTLY LOWER	SIMILAR	MUCH HIGHER	MUCH HIGHER	SIMILAR	LOWER	MUCH HIGHER	LOWER	MUCH LOWER	HIGHER	LOWER	LOWER
Total Part-time Employment per 1000 Pop'n age 15-74	HIGHER	LOWER	HIGHER	SLIGHTLY HIGHER	SIMILAR	LOWER	SIMILAR	MUCH HIGHER	LOWER	HIGHER	MUCH HIGHER	LOWER	HIGHER	SIMILAR
# Youth on Social Assistance per 1000 Youth in PA	HIGHER	LOWER	MUCH HIGHER	LOWER	MUCH LOWER	MUCH HIGHER	MUCH LOWER	HIGHER	SLIGHTLY HIGHER	MUCH HIGHER	MUCH HIGHER	SLIGHTLY LOWER	MUCH HIGHER	SIMILAR
Income of Youth on Social Assistance	SLIGHTLY HIGHER	HIGHER	SIMILAR	SIMILAR	SLIGHTLY HIGHER	SLIGHTLY HIGHER	SLIGHTLY LOWER	SIMILAR	SIMILAR	SLIGHTLY HIGHER	HIGHER	SLIGHTLY LOWER	SIMILAR	SLIGHTLY HIGHER
# Youth Registered in Parks & Rec Programs per 1000 Youth in PA	HIGHER	LOWER	MUCH LOWER	SIMILAR	LOWER	LOWER	MUCH LOWER	MUCH HIGHER	SLIGHTLY LOWER	MUCH LOWER	MUCH LOWER	MUCH HIGHER	MUCH HIGHER	SIMILAR

Legend

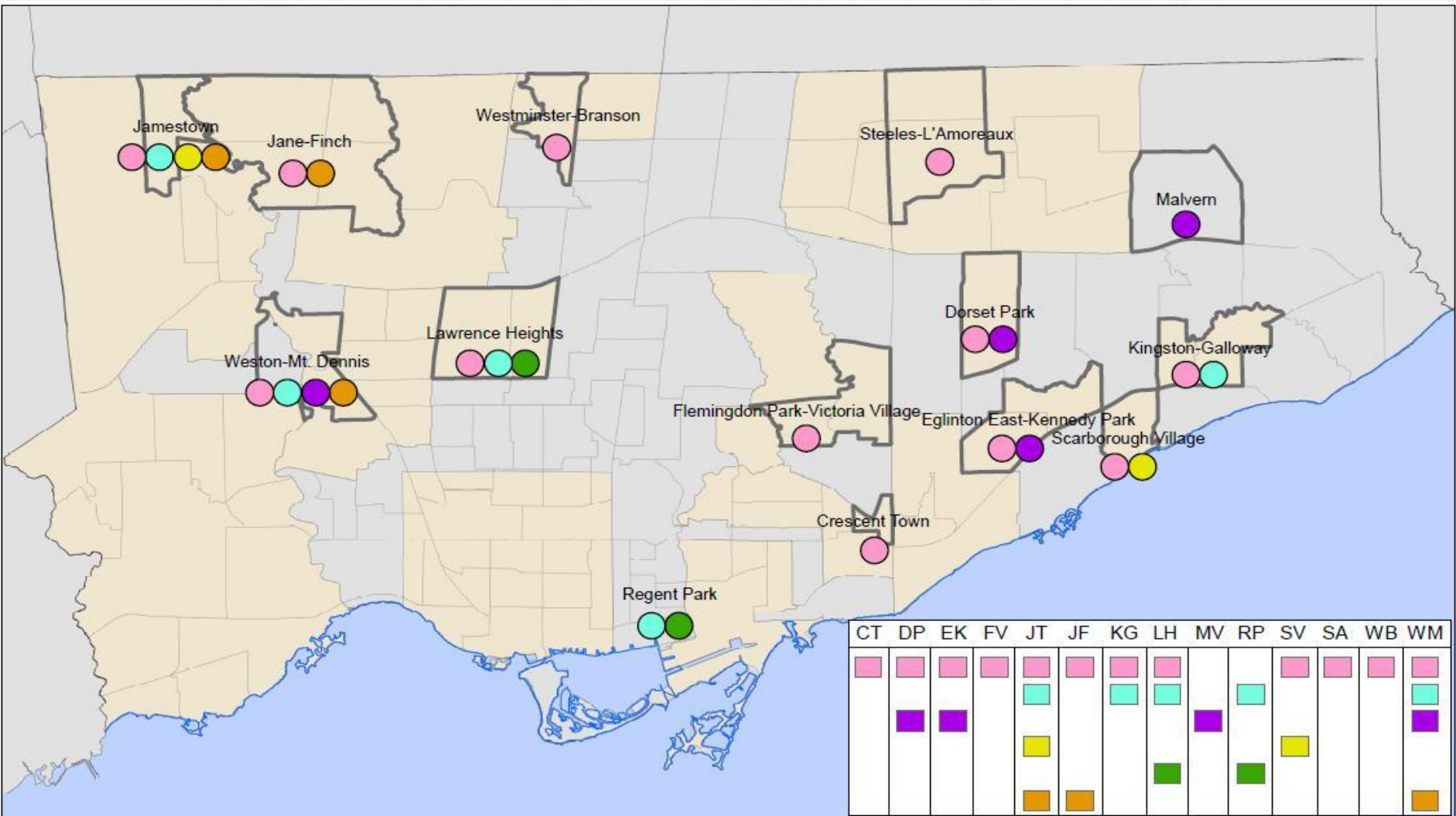
Much Higher 50% or higher
 Higher +21% to +50%
 Slightly Higher +11% to +20%
 Similar -10% to +10%
 Slightly Lower +11% to +20%
 Lower +21% to +50%
 Much Lower 50% or higher

Red Shades =
 Level of Negative
 Outcome

Green Shades =
 Level of Positive
 Outcome

Grey = Similar

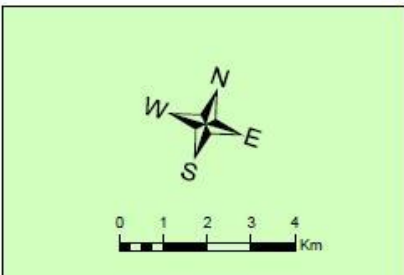
LOCAL PLANNING INITIATIVES ACROSS THE PRIORITY AREAS: MAP 2 (FEBRUARY 2009) DRAFT



- Proposed Local Immigration Partnership
- Local Labour Market Focused Planning
- Local Children's Services Planning
- Tower Renewal
- Community Revitalization
- Gang Prevention Pilot

- *LIP Coverage
- Neighbourhood
- Priority Area

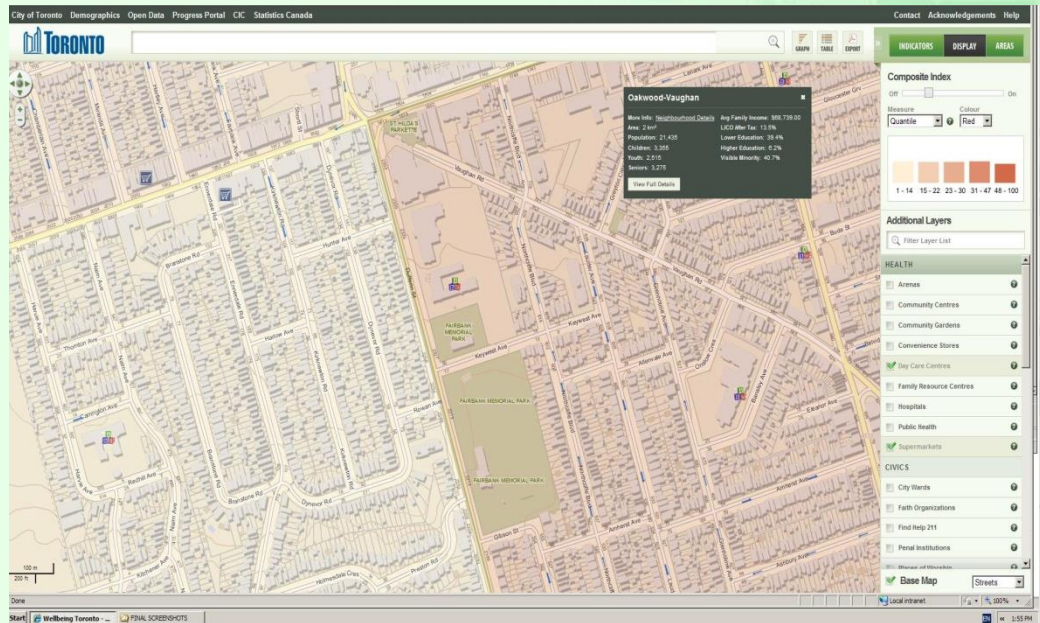
*Proposed Local Immigration Partnership



Source: City of Toronto, Survey & Mapping; Toronto Community Housing Corporation; Citizenship and Immigration Canada; National Crime Prevention Centre; Ministry of Training Colleges and Universities; Mayor's Tower Renewal
 Copyright City of Toronto 2009. All Rights Reserved.
 Prepared by: Social Policy Analysis & Research
 Date of Publication: February 2009
 Contact: spar@toronto.ca

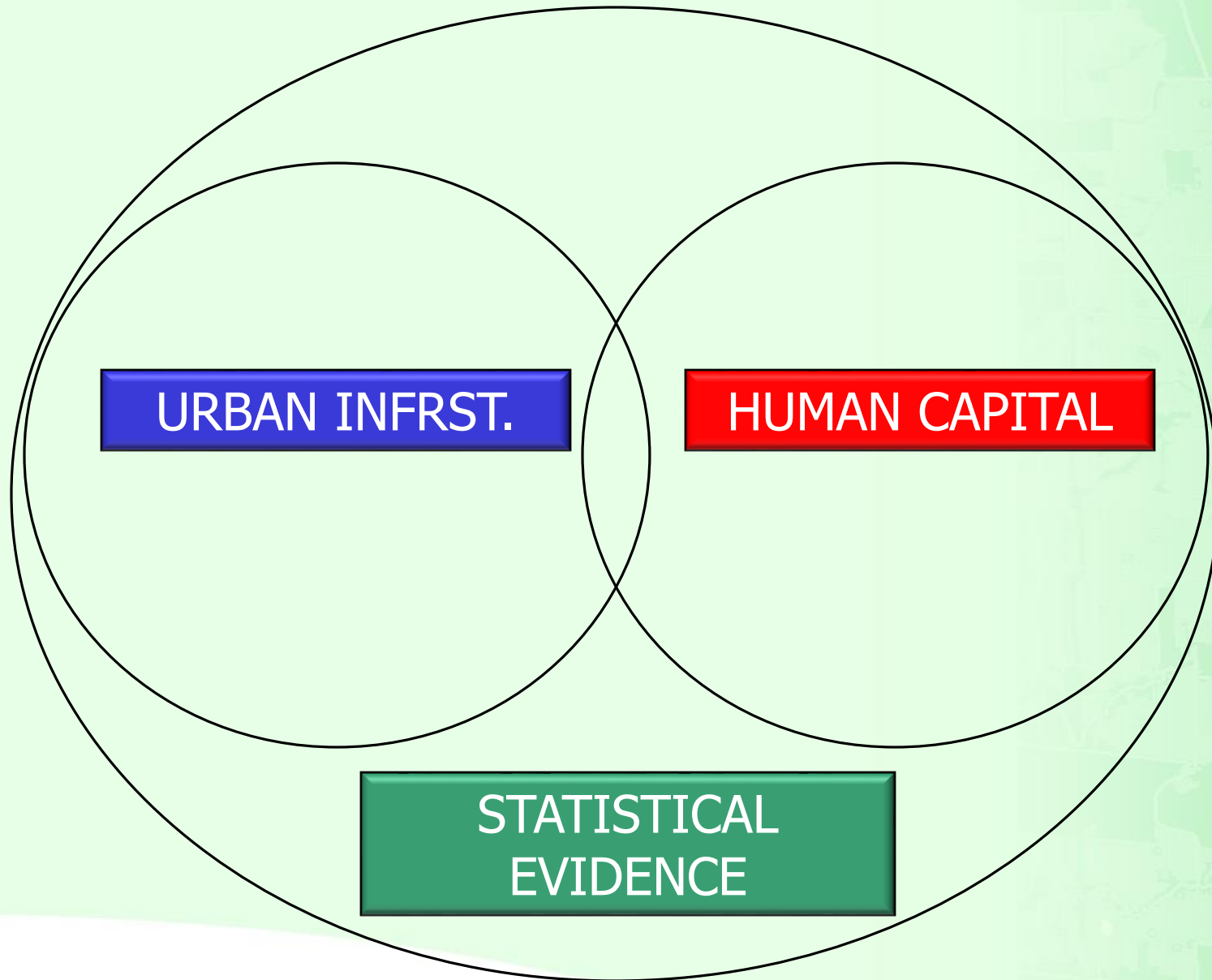
WellbeingToronto

This City of Toronto web-based application that allows the user to look at and combine various indicators about neighbourhood wellbeing in the City of Toronto.



<http://map.toronto.ca/wellbeing>

CONCLUSION ... Importance of DATA!



For more information contact:

Harvey Low

Manager

Social Research & Analysis Unit,
Social Development, Finance and Administration Division

Telephone: 416-392-8660

Email: hlow@toronto.ca

