

Alan Meisner
Social Development, Finance & Administration

100 Queen Street West
14th Floor, East Tower, City Hall
Toronto, Ontario M5H 2N2

Tel: 416 392-3999
Fax: 416 392-8403
ameisner@toronto.ca
www.toronto.ca

To: Policy Co-ordinating Committee

From: Research Sub-Committee

Issue: Release of the 2006 Census on Persons of Aboriginal Identity

Background:

On January 15, 2008 Statistics Canada released results from the 2006 Census about Persons of Aboriginal Identity. This is the fourth in a series of census data releases.

Aboriginal Identity refers to those persons who reported identifying with at least one Aboriginal group (North American Indian, Métis or Inuit), or those who reported being a Treaty Indian or a Registered Indian as defined by the *Indian Act* of Canada, or those who reported they were members of an Indian band or First Nation.

Census counts for Aboriginal Identity include persons living in private dwellings only. Individuals who lived in collective residences, institutions or were homeless at the time of the enumeration are not reflected. As we have noted for previous releases, results from the 2006 Census may be undercounting actual population numbers. The degree of undercount varies across population groups. In this regard, the number of urban Aboriginal persons reported by the Census has historically been sharply lower than estimates from agencies serving this community.

Highlights:

Canada and Provinces

- In 2006, there were 1,172,785 Aboriginals in Canada. Aboriginals accounted for 3.8% of the total population of 31,241,030.
- Nationally, 59.5% of Aboriginals were North American Indian, 33.2% were Métis, 4.3% were Inuit, 0.7% had multiple Aboriginal identities and 2.3% were other Aboriginal responses.
- More than one-half (53.2%) of Aboriginals were registered under the Indian Act of Canada. Registered persons, also known as Treaty Indians, can prove descent from a band that signed a treaty with the Government of Canada.
- From 2001 to 2006 the Aboriginal population in Canada increased by 196,475. This

represents a by 20.1% rate of growth, five times that of the non-Aboriginal population.

- Across the country, the highest concentration of Aboriginal persons can be found in Nunavut (85%), Northwest Territories (50.3%), Yukon Territory (25.1%), Manitoba (15.5%) and Saskatchewan (14.9%).

Ontario

- While Aboriginals comprise only 2% of its population, in absolute numbers Ontario had the largest Aboriginal population of any province or territory. In 2006, there were 242,490 Aboriginal persons living in Ontario, representing 20.7% of the Canadian total.
- From 2001-2006, the Aboriginal population of Ontario increased by 28.8%, a rate faster than that of Canada as whole. Over this period, the number of Aboriginals living in Ontario grew by 54,175 persons.
- Aboriginals are increasingly living off-reserve. According to the census, 54% of Aboriginals lived in an urban area.
- Despite this, only 15.7% of Aboriginals lived in one of the country's six major census metropolitan areas. Among these, Edmonton had the largest Aboriginal population (52,100 persons) followed by Vancouver (40,310), Toronto (26,576), Calgary (26,575), Ottawa (20,590) and Montreal (17,865).

The Greater Toronto Area and City of Toronto

- In 2006, there were 31,910 Aboriginal persons living in the Greater Toronto Area (GTA). This represents 2.7% of all Aboriginal persons in Canada and 13.2% of those in Ontario. From 2001 to 2006 the Aboriginal population in the GTA went from 23,950 to 31,910 persons, an increase of 33.2%.
- The Aboriginal population of the GTA has a lower median age (31.7 years) than the non-aboriginal population (37.3 years). The GTA Aboriginal population includes higher proportions of children (22.1% vs 18.7%) and youth (16% vs 13.4%). The proportion of Aboriginal seniors, meanwhile, is significantly lower (4.6% vs 11.4%).
- At the same time, women outnumber men in all age groups except those aged fourteen years and younger.
- 13,605 persons in the city of Toronto (0.5% of total population) were Aboriginal. Aboriginals in the city comprise 42.6% of those in the GTA. From 2001-2006, the number of Aboriginals in Toronto increased by 2,235 persons (19.7%).
- Among Aboriginals in the city, 67.1% were North American Indians, 26.8% were Métis and 1.4% were Inuit.
- Consultations by the City with various agencies serving the Aboriginal community indicate that they estimate the number of Aboriginal people living in Toronto to be between 60,000 and 70,000. This is in sharp contrast to the number reported by the census.

Table 1:

| Aboriginal Identity and Registered Indian Status Canada, Ontario, GTA and City of Toronto, 2006 | | | | | |
|--|---------------|----------------|------------|----------------|-------------|
| | Canada | Ontario | GTA | Toronto | RGTA |
| Total population by Aboriginal and non-Aboriginal identity population | 31241030 | 12028895 | 5510705 | 2476565 | 3034140 |
| Total Aboriginal identity population | 1172785 | 242490 | 31910 | 13605 | 18305 |
| North American Indian single response | 698025 | 158395 | 20445 | 9125 | 11320 |
| Métis single response | 389785 | 73605 | 9345 | 3650 | 5695 |
| Inuit single response | 50480 | 2035 | 415 | 195 | 220 |
| Multiple Aboriginal identity responses | 7740 | 1905 | 390 | 150 | 240 |
| Aboriginal responses not included elsewhere | 26760 | 6540 | 1300 | 485 | 815 |
| Non-Aboriginal identity population | 30068240 | 11786405 | 5478795 | 2462960 | 3015835 |
| Total population by Registered Indian status - | 31241030 | 12028900 | 5510700 | 2476565 | 3034135 |
| Registered Indian | 623780 | 123595 | 11490 | 5510 | 5980 |
| Not a Registered Indian | 30617250 | 11905300 | 5499220 | 2471050 | 3028170 |
| PERCENT IDENTITY BY GEOGRAPHY | | | | | |
| | Canada | Ontario | GTA | Toronto | RGTA |
| Total population by Aboriginal and non-Aboriginal identity population | 100.0 | 100.0 | 100.0 | 100.0 | 100.0 |
| Total Aboriginal identity population | 3.8 | 2.0 | 0.6 | 0.5 | 0.6 |
| North American Indian single response | 2.2 | 1.3 | 0.4 | 0.4 | 0.4 |
| Métis single response | 1.2 | 0.6 | 0.2 | 0.1 | 0.2 |
| Inuit single response | 0.2 | 0.0 | 0.0 | 0.0 | 0.0 |
| Multiple Aboriginal identity responses | 0.0 | 0.0 | 0.0 | 0.0 | 0.0 |
| Aboriginal responses not included elsewhere | 0.1 | 0.1 | 0.0 | 0.0 | 0.0 |
| Non-Aboriginal identity population | 96.2 | 98.0 | 99.4 | 99.5 | 99.4 |
| Total population by Registered Indian status data | 100.0 | 100.0 | 100.0 | 100.0 | 100.0 |
| Registered Indian | 2.0 | 1.0 | 0.2 | 0.2 | 0.2 |
| Not a Registered Indian | 98.0 | 99.0 | 99.8 | 99.8 | 99.8 |

Chart 1:

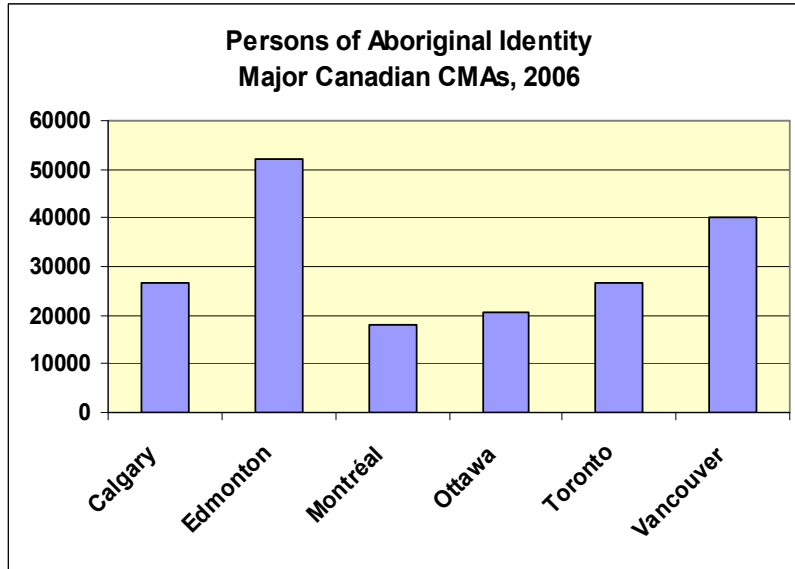


Chart 2:

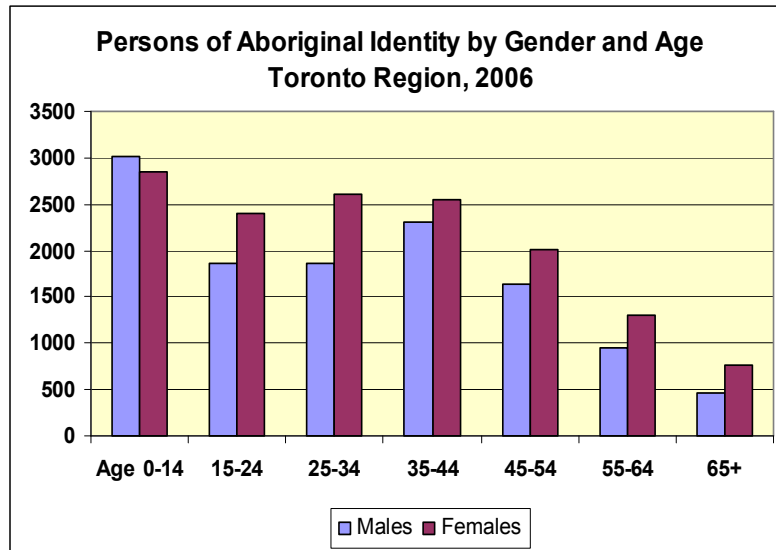


Chart 3:

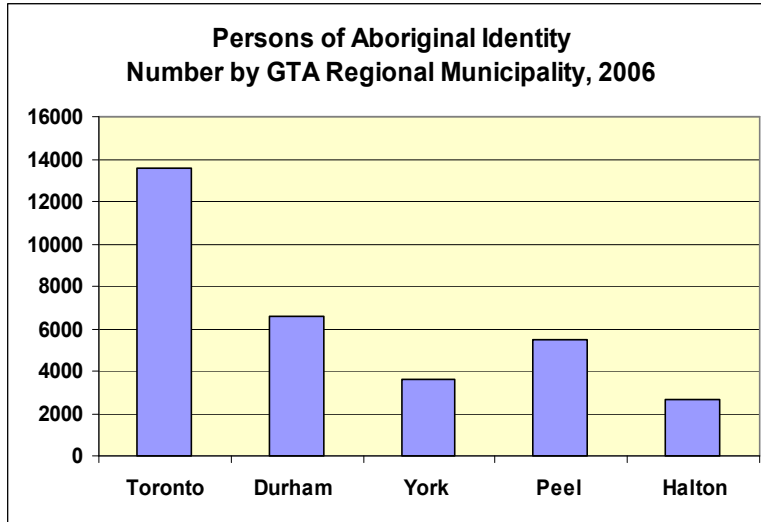
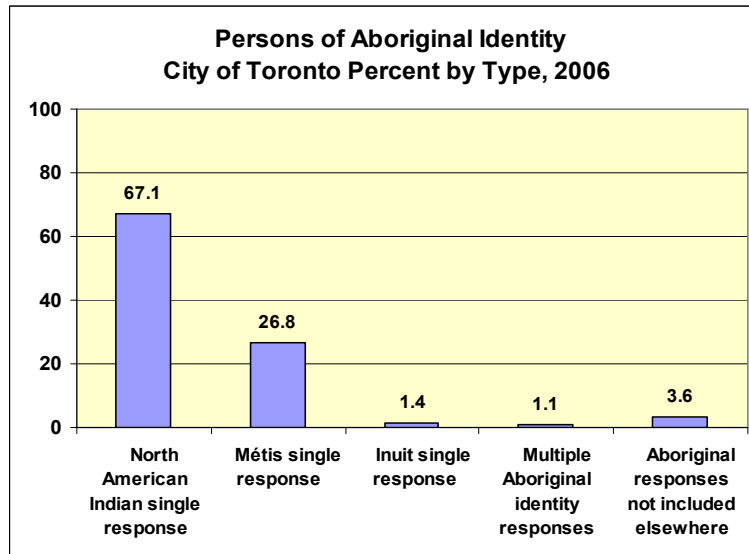
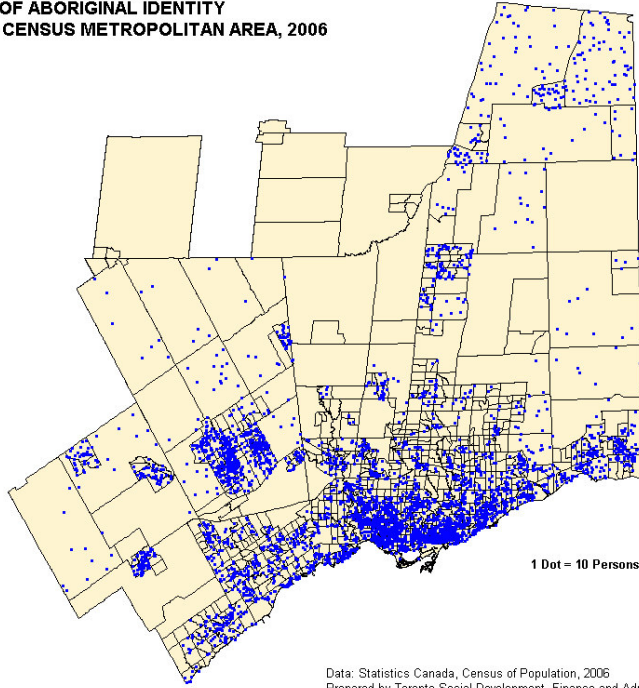


Chart 4:



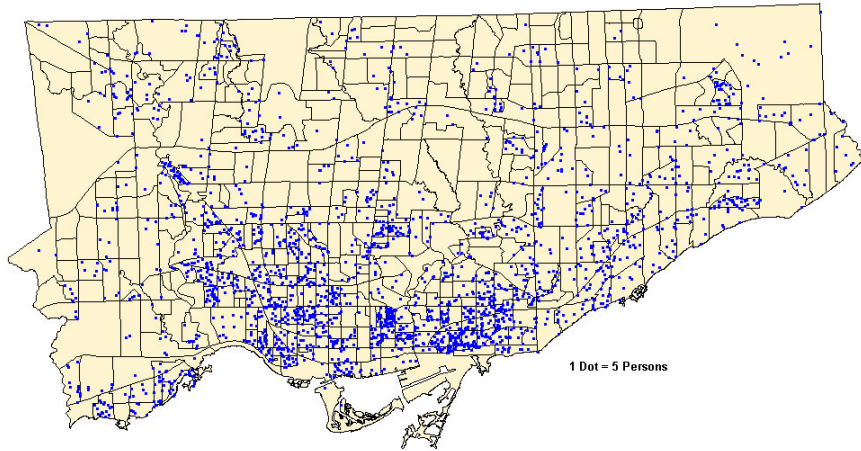
**PERSONS OF ABORIGINAL IDENTITY
TORONTO CENSUS METROPOLITAN AREA, 2006**



1 Dot = 10 Persons

Data: Statistics Canada, Census of Population, 2006
Prepared by Toronto Social Development, Finance and Administration Division, 2008

**PERSONS OF ABORIGINAL IDENTITY
CITY OF TORONTO, 2006**



1 Dot = 5 Persons

Data: Statistics Canada, Census of Population, 2006
Prepared by Toronto Social Development, Finance and Administration Division, 2008

More Releases

During 2008 the following Census data will be released:

| | |
|----------------|---|
| March 4, 2008: | Labour, Place of Work & Commuting to Work, Education, Language |
| April 2, 2008: | Ethnic Origin and Visible Minorities |
| May 1, 2008: | Income and Earnings, Housing and Shelter Costs |

Contact for further information:

If you require information about Toronto's Aboriginal population, please contact **Ceta Ramkhalawansingh**, Manager, Diversity Management and Community Engagement, at **392-6824** or **Mae Maracle**, Consultant, Diversity Management and Community Engagement, at **392-5583**.

For more information about the 2006 Census data or the PCT- Research Sub-committee please contact Alan Meisner, Social Development, Finance and Administration Division, at 392-3999

Date: January 16, 2008