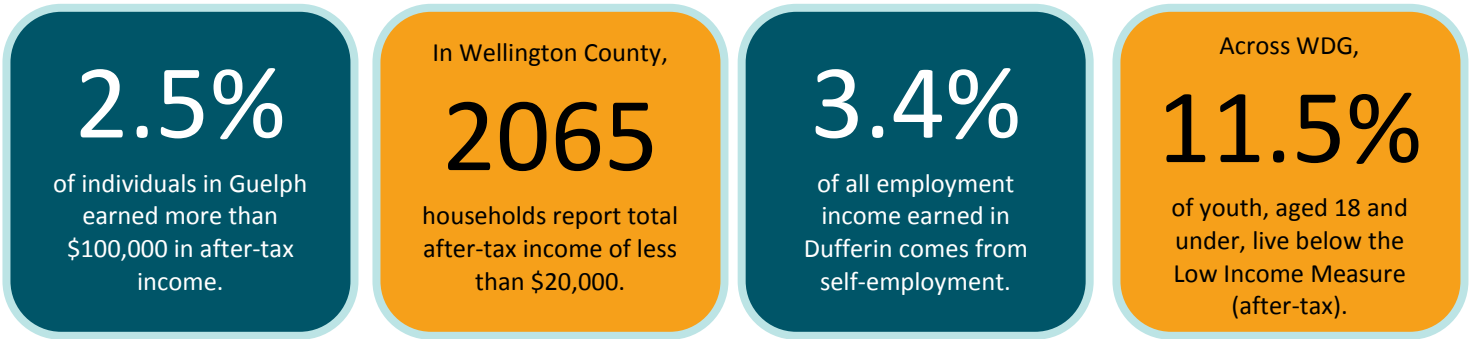


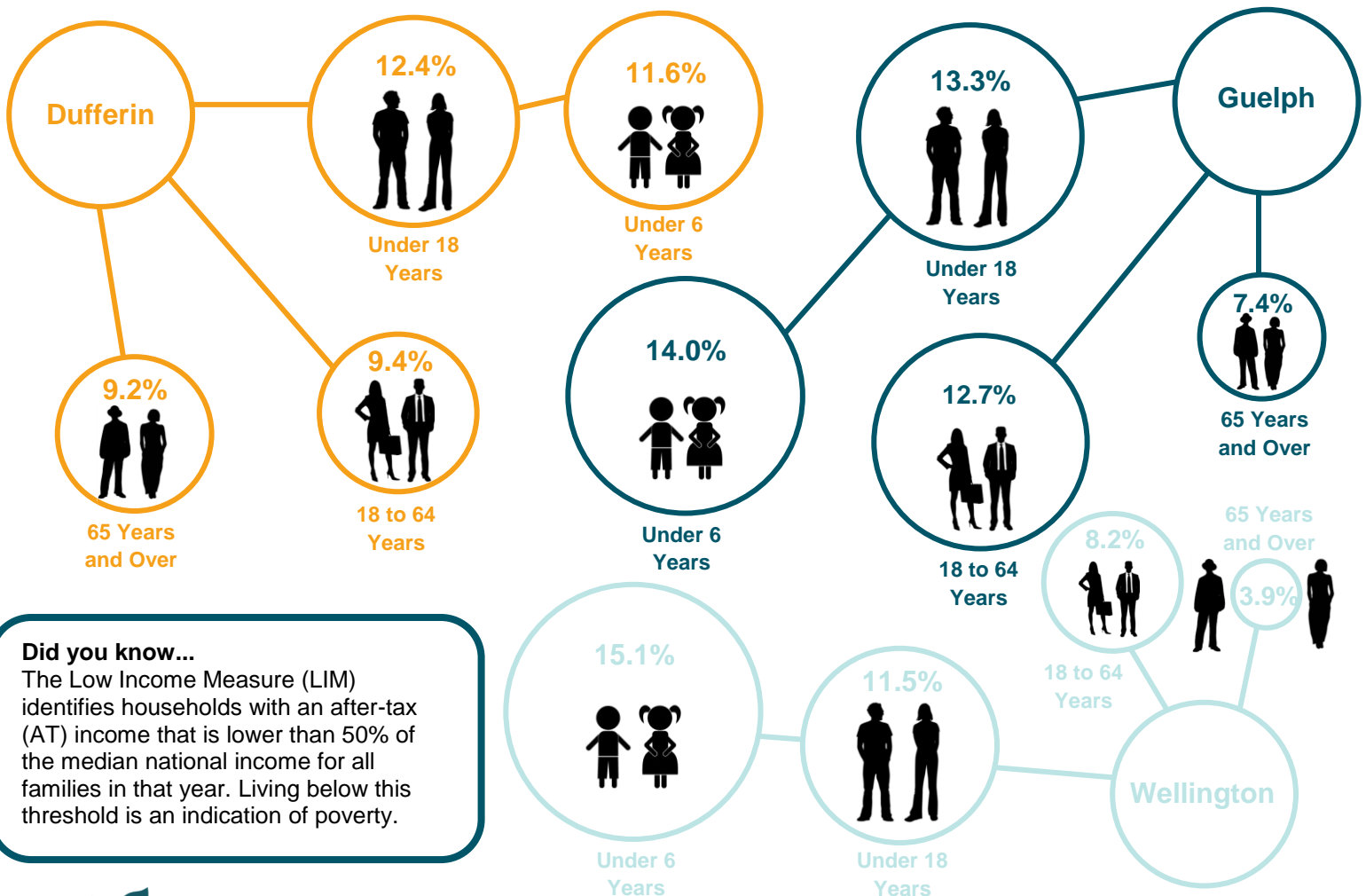
2011 NHS BULLETIN:

Income & Earnings

This report summarizes income and earnings data collected during the 2011 National Household Survey (NHS) for Wellington, Dufferin, and Guelph (WDG). Income data reported in this portion of the 2011 NHS was based on the year prior (2010). In 2010, 203,985 individuals in WDG, aged 15 and over, reported income. The average income (after-tax) was \$36,083.49.



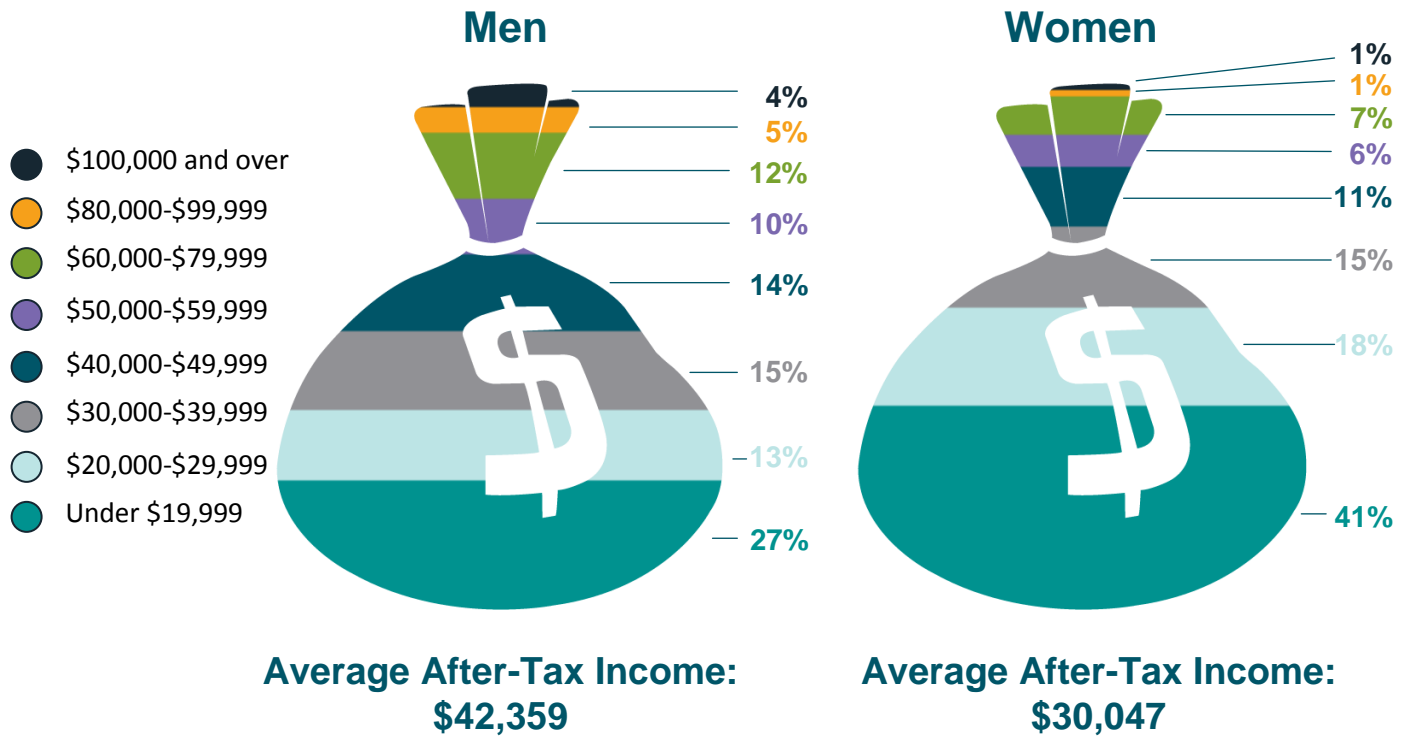
Prevalence of Low Income in 2010 Based on LIM-AT



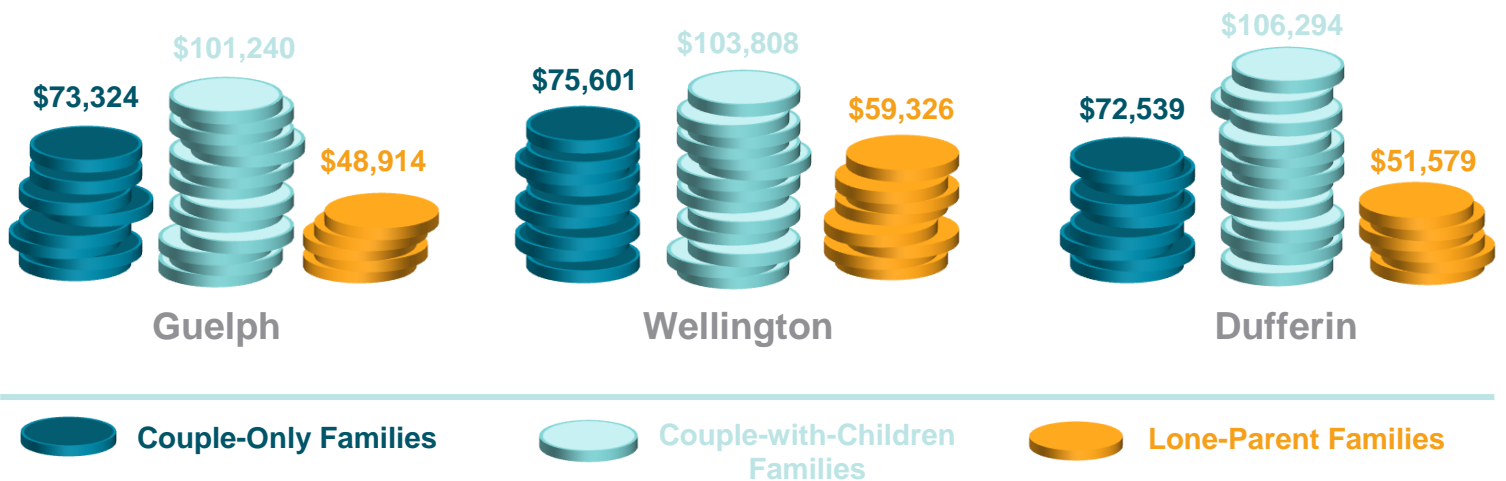
Did you know...
The Low Income Measure (LIM) identifies households with an after-tax (AT) income that is lower than 50% of the median national income for all families in that year. Living below this threshold is an indication of poverty.

Note: Direct comparisons cannot be made between the 2006 Census Long-Form data and the 2011 National Household Survey, which replaced the Long-Form. The 2006 Census Long-Form was mandatory while the new 2011 National Household Survey was voluntary. Due to this change in methodology, the 2011 sample may be subject to underreporting, or non-response bias, from individuals of certain sub-groups who are less likely to respond to surveys.

Gender Differences in After-Tax Individual Income in WDG, 2010



Average After-Tax Family Income, 2010



Did you know...

“Family income” refers to the total combined income of all members of a family. Families can be couple-only families, couple-with-children families, and lone-parent families.