



Backgrounder

Release of 2006 Census results Marital Status, Families, Households and Dwelling Characteristics

On September 12, 2007 Statistics Canada released further results from the 2006 census focusing on Marital Status, Families, Households and Dwelling Characteristics.

- According to the Census, the population of the City of Toronto is 2,503,281, an increase of 1% since 2001. This count does not include the Census undercoverage, which is discussed below.

Families

- In 2006 there were 670,105 families in Toronto (up 7,000 from 2001) and 1,533,660 in the GTA. Toronto housed 44% of the GTA total, more than any other regional municipality in the GTA. Peel region was next, home to 21% of GTA families.
- Within the GTA, Toronto was home to 41% of married couples, 50% of common-law couples and 53% of lone-parent families. The number of married couples has remained stagnant in Toronto but increased significantly in the Rest of the GTA since 1996. The number of lone-parent families in the Rest of the GTA is converging on the number in Toronto (121,000 versus 136,000 families).
- The structure of the family in Toronto continues to change. Among Toronto families, 70% were married couples, 9% were common-law couples and 20% were led by lone parents in 2006. It is interesting to note that the number of common-law families increased by 10.4%, lone parent families by 4% and married couple families experienced a decline of 0.8% between 2001 and 2006.

Marital Status

- Legally married persons declined 0.3% in Toronto, and rose 17.0% in the 905 area between 2001 and 2006, while the number of Other Than Legally Married persons increased slightly (+4.6%) in Toronto and significantly (+22.5%) in the 905 area. Toronto now accounts for only a 41% share of legally married persons in the GTA (45% in 2001).
- Divorcees in Toronto increased by 8.3%, lower than the GTA increase of 14.9%. Single persons increased by 5.2%. Toronto experienced a 1.8% drop in the number of widowers.

Seniors Living Alone

- There were 89,790 seniors living alone in Toronto in 2006, an increase of 5.4% since 2001 and representing 63% of all seniors living alone in the GTA.

Children Living in their Parental Home

- A record high of 17% of children 25+ years of age lived in their parental home in 2006, higher than any other municipality in the GTA and higher than the GTA average of 14%.
- The average number of children at home per census family remains higher in the 905 area (1.3) than in Toronto (1.2). This is unchanged since 1996.

Households

- The number of households in Toronto grew by 3.8%, an increase of 36,250 households between 2001 and 2006. Total households in the city amounted to 979,330, representing 50% of all GTA households.
- Of all households, 35% are non-family, 62% are single-family and 3% are multiple-family. Most non-family households are in Toronto (67% of those in the GTA) while most single-family (56%) and multiple-family (59%) households are in the 905 area. Toronto's non-family households increased by 8.8%, single-family households by 1.7% while multiple-family households dropped by 4.4%.
- The number of single-person households in Toronto stood at 295,825, an increase of 11% over the 2001 number. Larger households of 4-5 and 6 persons experienced declines over this period (-2.2% and -9.2% respectively).
- The average number of persons in private households is the lowest in Toronto (2.5) and highest in Peel (3.2) and York (3.2).

Tenure

- In Toronto owners outnumber renters: 54% to 46%.
- The number of renter households declined by 17,700 between 2001 and 2006 continuing the trend of the previous five years.
- The 54,000 increase in owner households is the biggest absolute increase since 1951.
- Toronto is home to 40% of all owner households and 72% of all renter households in the GTA.
- The Rest of the GTA has a very different tenure split. In 2006, 83% of household were owners and 17% of households were renters.

Period of Construction

- 81% of Toronto's dwellings are more than 20 years old (pre-1986).
- Only 6% of Toronto dwellings were constructed between 2001 and 2006, versus 17% of dwellings in the Rest of the GTA.

Structure Type – Probable Data Problem

The data released today show large changes in the types of dwelling units in the city. For example, the number of single and semi-detached houses fell by 55,600, whereas the number of duplex units and apartment units in buildings under 5 storeys increased by 66,400. This may not reflect actual construction and demolition patterns, suggesting that many units were 'reclassified' between 2001 and 2006. For example, duplex or triplex units which were accurately recorded in 2006, may have been counted only as single or semi-detached houses in 2001.

Similarly, the Census shows an increase of 24,700 apartment units in buildings over 5 storeys. Canada Mortgage and Housing Corporation's (CMHC) data show that 43,170 such units were completed in the 5 years from 2001 to 2005. The Census shows 60,400 units built between 2001 and 2006 ("Period of Construction"), on a par with total completions recorded by CMHC (58,760). There is a clear problem analysing the data by structure type at this time.

Census Undercount

Although Statistics Canada makes a great effort to count every person, some people are missed in each Census. For example, people may be traveling, some dwellings are hard to find and some people simply refuse to participate. Statistics Canada takes this into account and estimates an 'undercoverage' rate for the urban region (CMA) every Census, but not for the city.

Statistics Canada has reported a 2006 population for the City of Toronto of 2,503,281. When the undercoverage is taken into account, however, the population could be between about 2,630,000 and 2,705,000.

The 2006 Census counted an unexpectedly high number of unoccupied dwelling units. This leads City staff to suspect that the Census may have missed more households than

usual. The discussion of age and sex should be seen in that light, particularly since the undercoverage is greatest for 20-35 year olds.

Statistics Canada advises that population estimates based on the 2006 Census counts, adjusted for net undercoverage, will be available in the fall of 2008. For more information on the subject, please visit Statistics Canada's website at <http://www12.statcan.ca/english/census/index.cfm>.

Definitions

Household: refers to a person or a group of persons (other than foreign residents) who occupy a private dwelling and do not have a usual place of residence elsewhere in Canada.

Family: a Census family refers to a married couple (with or without children of either or both spouses), a couple living common-law (with or without children of either or both partners), or a lone-parent of any marital status, with at least one child living in the same dwelling. A couple may be of opposite or same sex. 'Children' in a census family include grandchildren living with their grandparent(s) but with no parents present.

More Releases

This is the third release of data from the 2006 Census. During 2007 and 2008, the following Census data will be released:

December 4, 2007:	Language, Mobility and Migration, Immigration and Citizenship
January 15, 2008:	Aboriginal Peoples
March 4, 2008:	Labour, Place of Work & Commuting to Work, Education, Language
April 2, 2008:	Ethnic Origin and Visible Minorities
May 1, 2008:	Income and Earnings, Housing and Shelter Costs

Prepared by: Policy and Research, City Planning Division;
Social Policy Analysis & Research

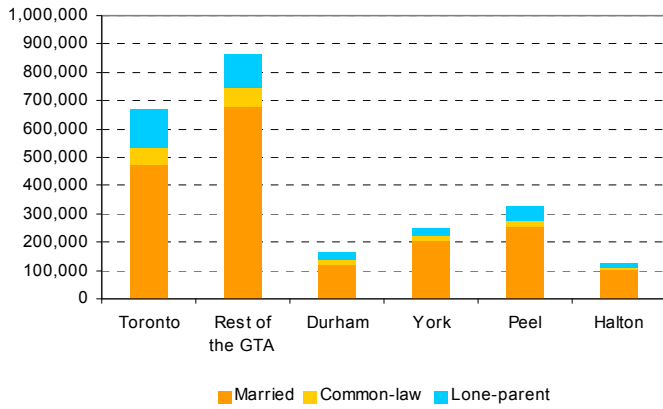
Contact for further information:

Peter Moore, City Planning, Research and Information: 416-392-8806

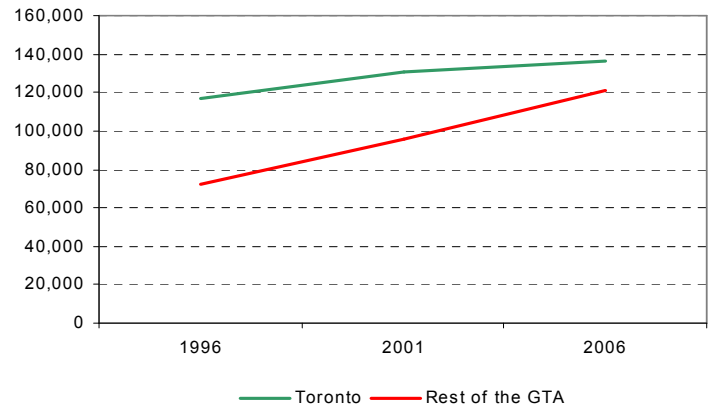
Harvey Low, Social Policy Analysis and Research: 416-392-8660

Date: September 13, 2007

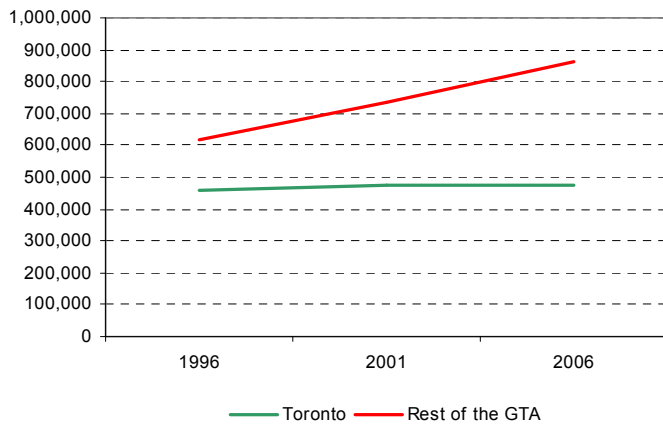
Family Structure, 2006



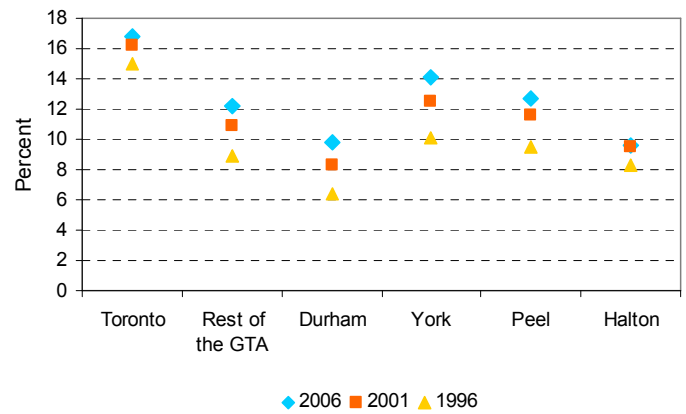
Lone Parents



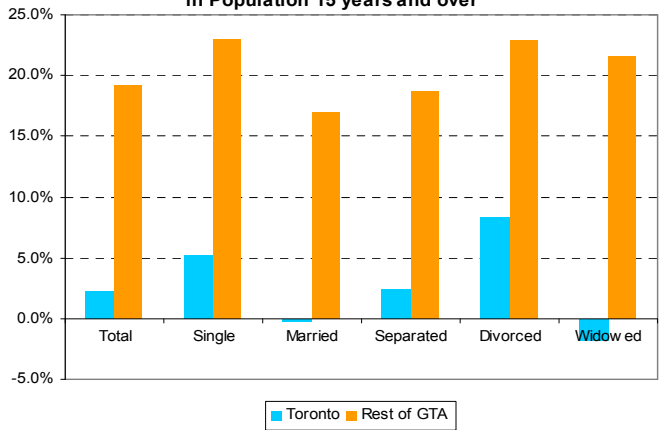
Married Couples



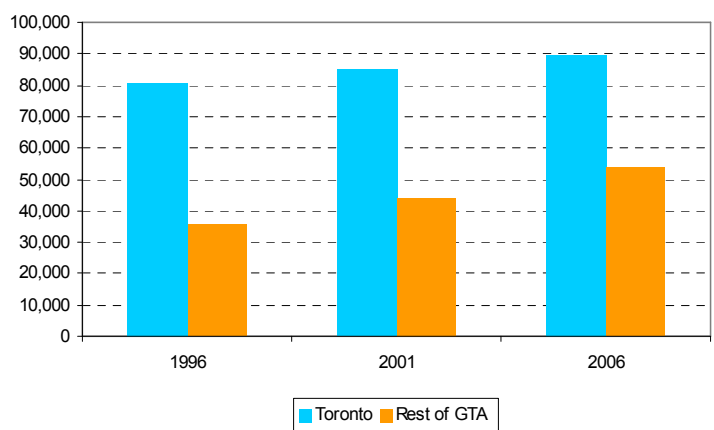
Children 25+ As a Percentage of all Children Living At Home



% Change in Legal Marital Status 2001-2006 in Population 15 years and over



Seniors Living Alone

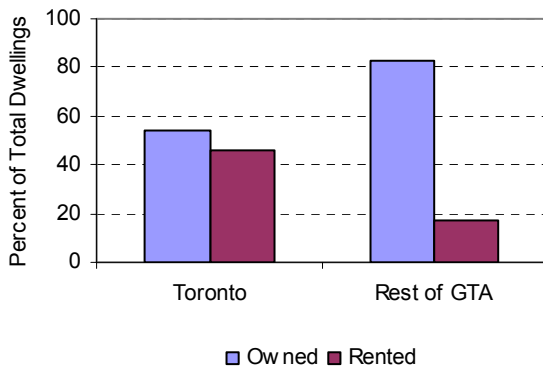


TENURE SPLIT, 2001-2006

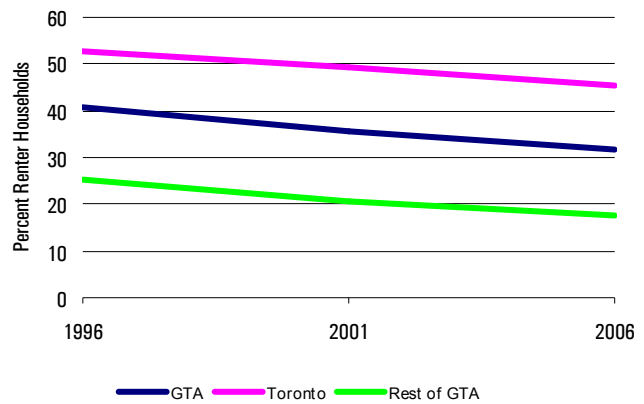
	2001					2006				
	Total #	Owned #	Owned %	Rented #	Rented %	Total #	Owned #	Owned %	Rented #	Rented %
GTA	1,780,475	1,143,565	64	636,910	36	1,965,940	1,346,570	68	619,340	32
Toronto	943,080	478,545	51	464,535	49	979,440	532,585	54	446,850	46
Rest of GTA	837,395	665,020	79	172,375	21	986,500	813,985	83	172,490	17
Durham	171,715	136,935	80	34,780	20	194,670	159,880	82	34,785	18
York	223,170	192,600	86	30,570	14	275,680	243,310	88	32,360	12
Peel	308,845	229,730	74	79,115	26	359,065	280,465	78	78,595	22
Halton	133,665	105,755	79	27,910	21	157,085	130,330	83	26,750	17

Source: Statistics Canada

Tenure Split, 2006



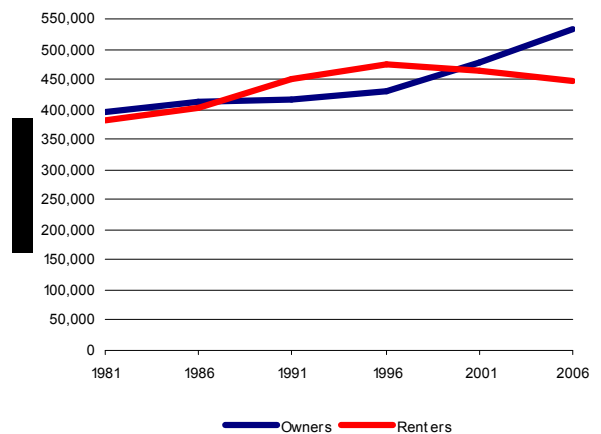
GTA Renter Levels, 1996 - 2006



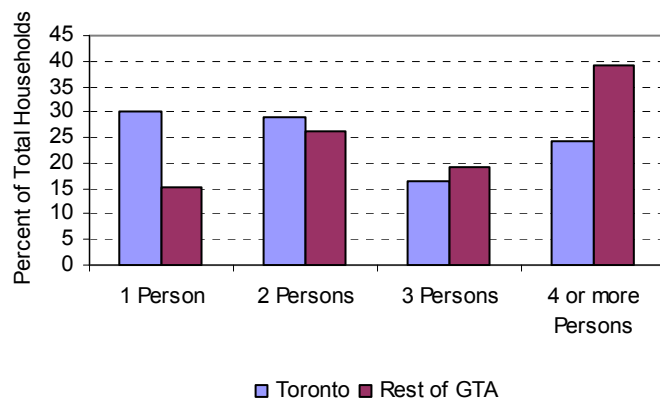
Housing Tenure, Toronto, 1981 - 2006

Year	% Owners	% Renters
1981	51.0	49.0
1986	50.7	49.3
1991	48.1	51.9
1996	47.5	52.5
2001	50.7	49.3
2006	54.4	45.6

Households by Tenure, Toronto, 1981 - 2006

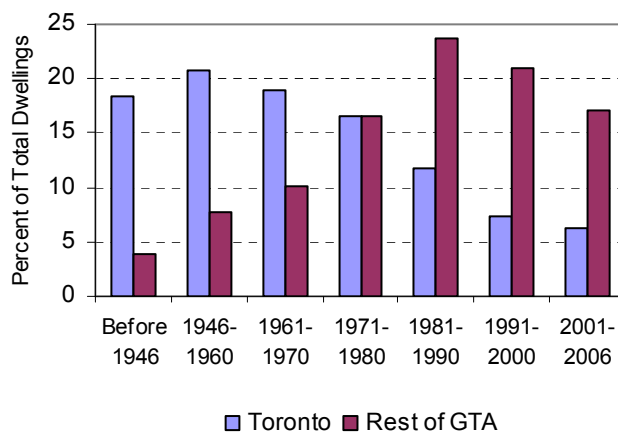


Household Size, 2006



Period of Construction, 2006	Toronto		Rest of GTA		GTA	
	#	%	#	%	#	%
Total Dwellings	979,440	100.0	986,505	100.0	1,965,945	100.0
Before 1946	180,785	18.5	38,200	3.9	218,985	11.1
1946-1960	203,495	20.8	76,075	7.7	279,570	14.2
1961-1970	185,315	18.9	99,750	10.1	285,065	14.5
1971-1980	161,750	16.5	162,835	16.5	324,585	16.5
1981-1990	115,490	11.8	233,440	23.7	348,930	17.7
1991-2000	72,215	7.4	207,015	21.0	279,230	14.2
2001-2006	60,390	6.2	169,190	17.2	229,580	11.7

Period of Construction, 2006



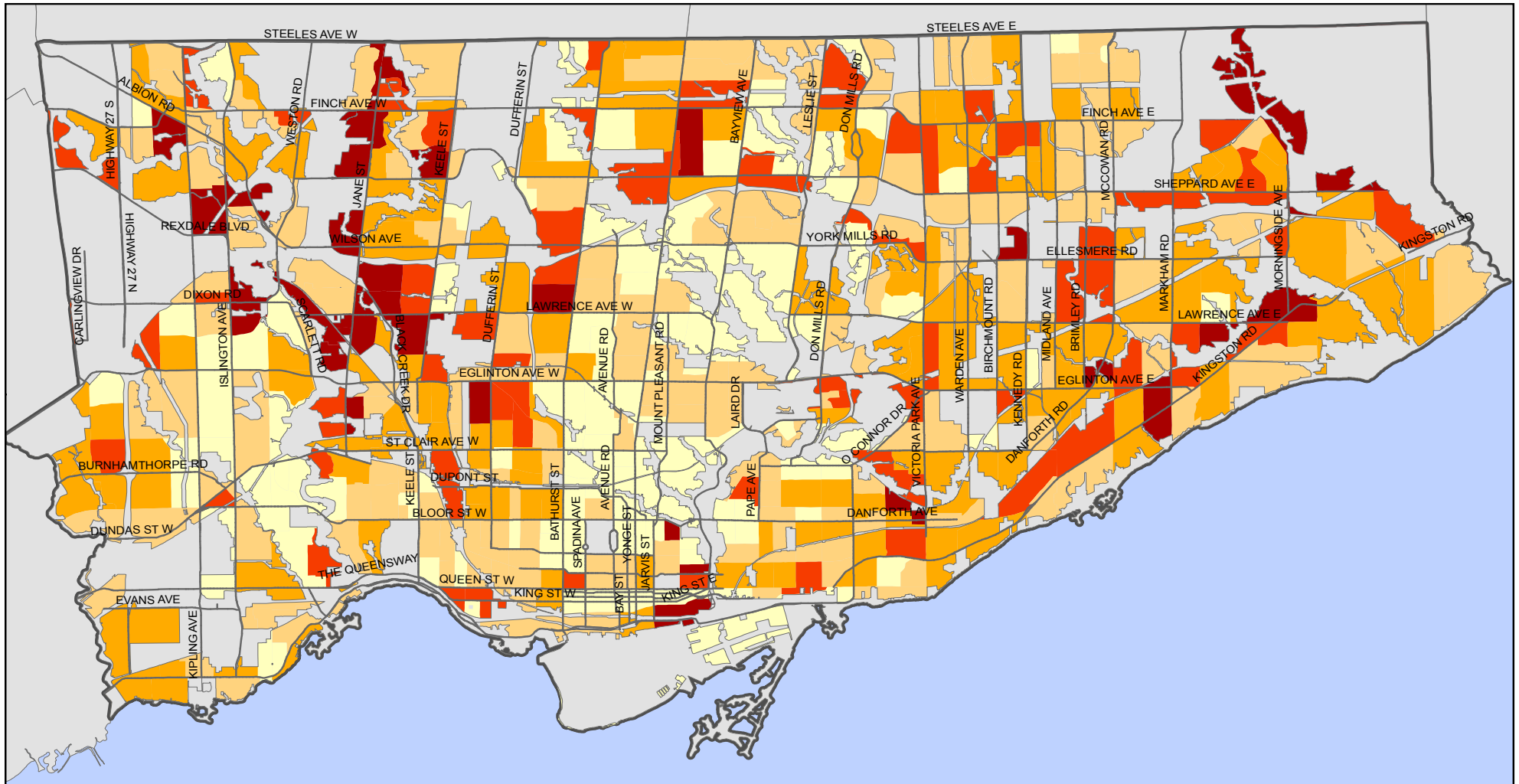
Housing in Toronto and the GTA, 2006 Census

	GTA	Toronto	Rest of GTA	Durham	York	Peel	Halton
Total Dwellings	1,965,940	979,440	986,500	194,670	275,680	359,065	157,085
<i>Tenure</i>							
Owned	1,346,570	532,585	813,985	159,880	243,310	280,465	130,330
Rented	619,340	446,850	172,490	34,785	32,360	78,595	26,750
<i>Structure Type</i>							
Single Detached	851,390	266,880	584,510	131,345	187,975	168,775	96,415
Semi-Detached	145,950	69,465	76,485	11,345	15,340	42,170	7,630
Row/Town house	169,400	54,690	114,710	17,860	28,685	44,545	23,620
Apartment Duplex	83,100	44,105	38,995	7,085	14,315	15,110	2,485
Apartment <5 storeys	216,300	162,985	53,315	13,150	9,485	22,020	8,660
Apartment 5+ storeys	496,560	379,700	116,860	13,420	19,540	66,020	17,880
Other Single-Attached	2,280	1,345	935	300	220	200	215
Movable dwelling	685	165	520	165	115	190	50
<i>Dwelling size</i>							
No. of rooms	6.3	5.5	7.2	7.2	7.5	6.8	7.3
No. of bedrooms	2.7	2.3	3.2	3.1	3.3	3.1	3.1
<i>Dwelling condition</i>							
Regular maintenance only	1,376,070	642,825	733,245	137,090	206,865	270,565	118,725
Minor Repairs	473,175	260,270	212,905	47,850	59,100	73,965	31,990
Major Repairs	116,680	76,335	40,345	9,730	9,720	14,530	6,365
<i>Period of construction</i>							
Before 1946	218,985	180,785	38,200	16,005	8,765	6,405	7,025
1946-1960	279,570	203,495	76,075	20,155	15,575	20,660	19,685
1961-1970	285,065	185,315	99,750	20,765	16,925	40,590	21,470
1971-1980	324,585	161,750	162,835	30,965	30,495	74,085	27,290
1981-1990	348,930	115,490	233,440	45,255	75,465	84,805	27,915
1991-1995	122,670	35,705	86,965	16,855	26,760	32,970	10,380
1996-2000	156,560	36,510	120,050	18,600	44,440	41,375	15,635
2001-2006	229,580	60,390	169,190	26,070	57,250	58,180	27,690
<i>Household size</i>							
1 Person	448,210	295,825	152,385	35,100	34,930	52,485	29,870
2 Persons	542,915	282,685	260,230	58,040	66,245	85,935	50,010
3 Persons	349,805	161,440	188,365	35,745	54,785	70,005	27,830
4 - 5 Persons	529,685	200,735	328,950	58,555	102,505	123,140	44,750
6 or more Persons	95,050	38,645	56,405	7,230	17,205	27,480	4,490
Average size	2.8	2.5	3.1	2.9	3.2	3.2	2.8
<i>Household Type</i>							
Single family households	1,369,110	602,235	766,875	149,705	221,760	275,045	120,365
Multiple family households	78,820	32,640	46,180	5,250	14,735	23,135	3,060
Non - family households	518,010	344,565	173,445	39,715	39,190	60,880	33,660
One person	448,075	295,520	152,555	35,135	34,835	52,555	30,030
Two or more persons	69,935	49,045	20,890	4,580	4,355	8,325	3,630

Note: Numbers throughout this report may not add to totals due to rounding.

Lone-Parent Families 2006

By Census Tract

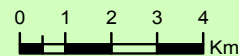


Legend

Total Lone-Parent Families

- 0 - 150
- 151 - 255
- 256 - 355
- 356 - 490
- 491 - 980

- Major Arterial Street
- Non-Residential Area/No Data

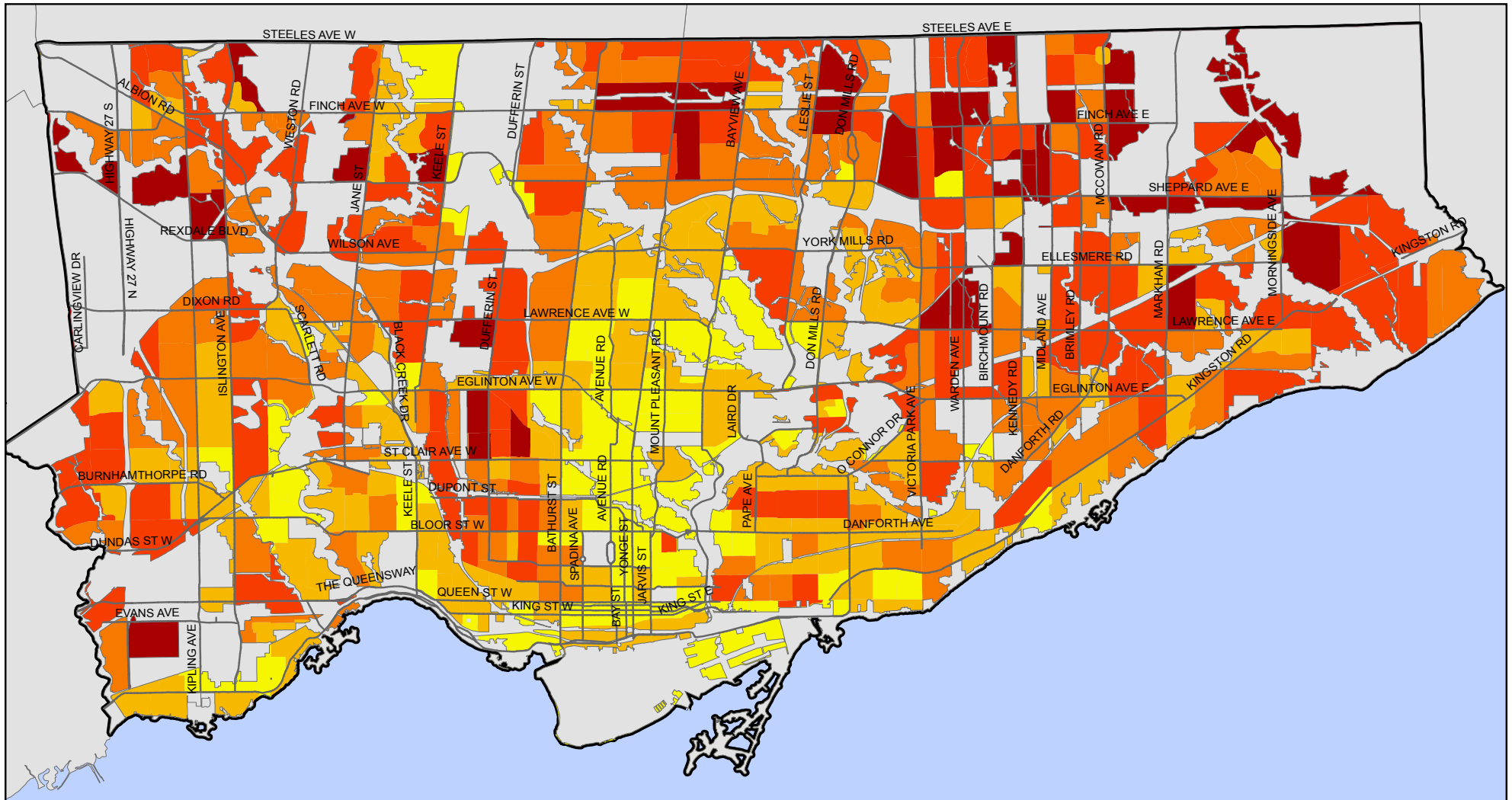


Source: Statistics Canada, Census 2006; City of Toronto.

Copyright (c) 2007 City of Toronto. All Rights Reserved.
 Published: September 2007
 Prepared by: Social Policy Analysis & Research
 Contact: spar@toronto.ca

Children 25+ Years of Age Living at Home 2006

By Census Tract

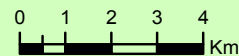


Legend

Children 25+ Living at Home

- 10 - 125
- 126 - 225
- 226 - 325
- 326 - 455
- 456 - 1,455

- Major Arterial Street
- Non-Residential Area/No Data

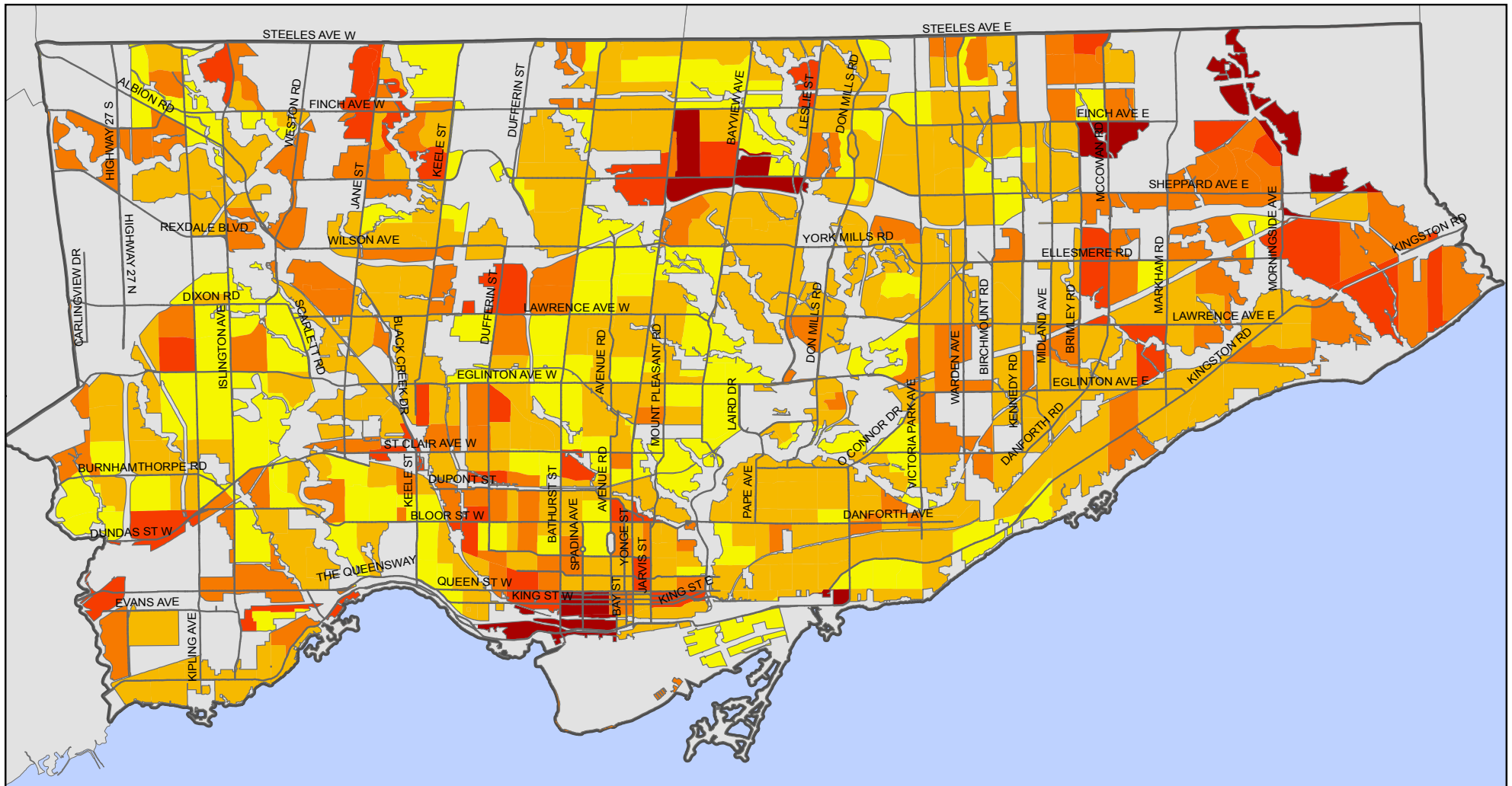


Source: Statistics Canada, Census 2006; City of Toronto.

Copyright (c) 2007 City of Toronto. All Rights Reserved.
 Published: September 2007
 Prepared by: Social Policy Analysis & Research
 Contact: spar@toronto.ca

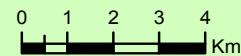
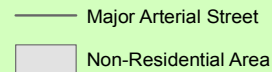
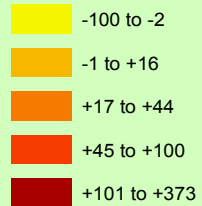
Single-Person Private Households, % Change 2001-2006

By Census Tract



Legend

Percent Change in Single-Person Private Households, 2001-2006

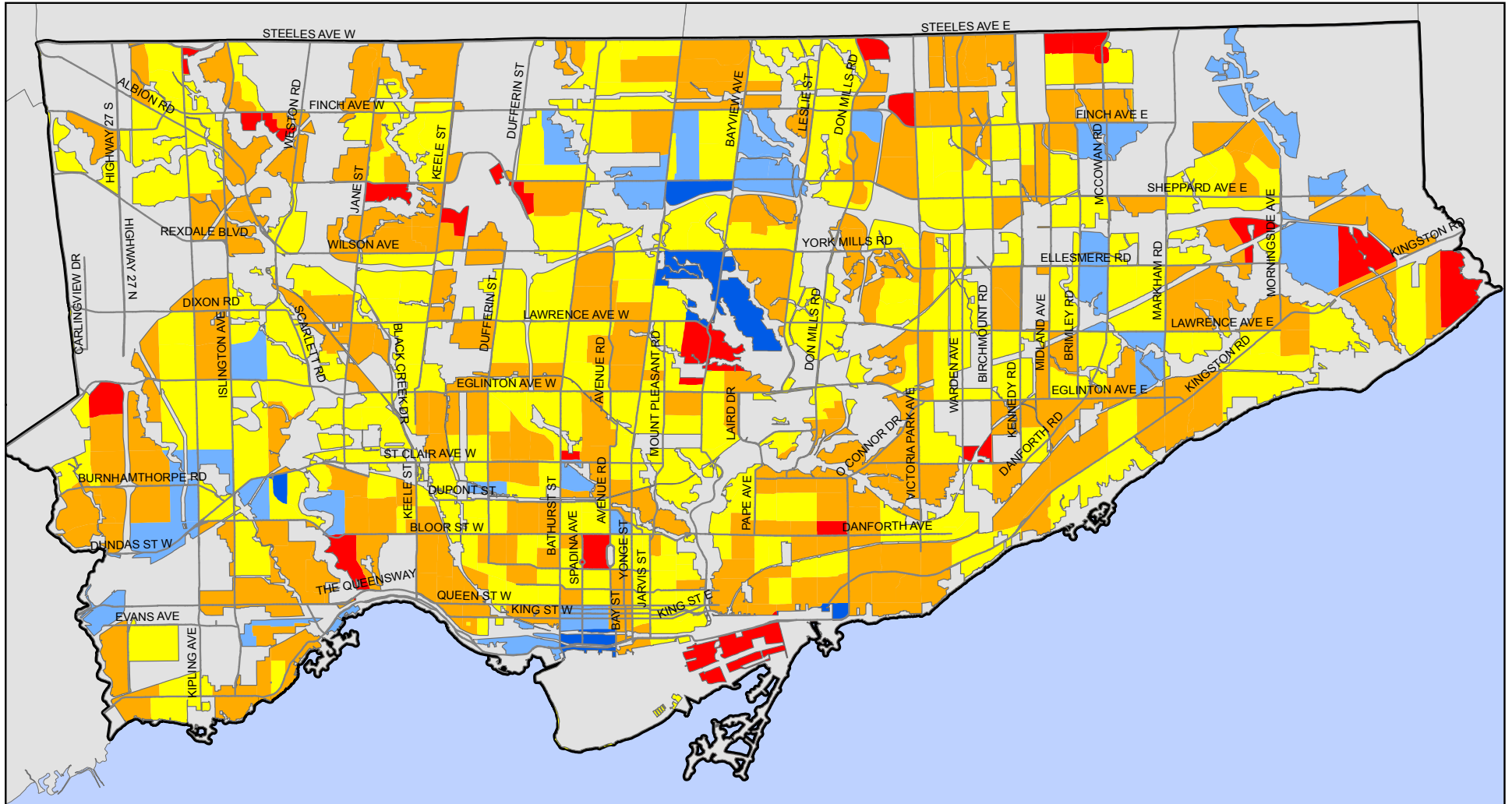


Source: Statistics Canada, Census 2006; City of Toronto.

Copyright (c) 2007 City of Toronto. All Rights Reserved.
 Published: September 2007
 Prepared by: Social Policy Analysis & Research
 Contact: spar@toronto.ca

Renters, % Change 2001-2006

By Census Tract

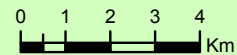
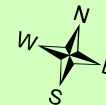


Legend

Percent Change in Tenure - Rented, 2001-2006

- 100% to -32%
- 31% to -6%
- 5% to +30%
- +31% to +117%
- +118% to +260%

- Major Arterial Street
- Non-Residential Area/No Data



Source: Statistics Canada, Census 2006; City of Toronto.

Copyright (c) 2007 City of Toronto. All Rights Reserved.
 Published: September 2007
 Prepared by: Social Policy Analysis & Research
 Contact: spar@toronto.ca